



EKSELANS BY ITS

# USER MANUAL

## **MD HD L 4K RC**

122016

DIGITAL MODULATOR WITH BUILT-IN  
HDMI 4K LOOP

V02

# TABLE OF CONTENTS

Introduction:.....	3
Introduction: .....	3
Key features:.....	3
Packaging content:.....	3
Interfaces and connection:.....	4
Interfaces:.....	4
Diagrama de instalación: .....	4
Basic programming using buttons:.....	6
Advanced programming using MD HD Soft:.....	7
Technical specifications:.....	8
Channel and Frequency Table (Standard B/G):.....	9

## Introduction:

### Introduction:

Digital modulator to COFDM/QAM/ISDB-T. 1 input + HDMI LOOP HDMI 4K. Output frequencies: 170-230MHz + 470- 862MHz. Output level (DIN 45004B): > 80dB  $\mu$  V. RF mix input (5-862MHz). USB recorder / player. USB for programming professional parameters. IR transmitter 33-56 KHz modulated (included). Transmits 5Vdc for TRC powering.

### Key features:

- Resolution up to 1080p.
- Active HDMI source indication.
- LOOP HDMI IN / OUT.
- Excellent MER modulation quality  $\geq$ 33 dB.
- Quick menu. Easy adjustment using channel buttons, attenuation, program ID.
- Easy Advanced Programming using PC Program (MDHDSOft).
- Universal infrared extender Allows selection of infrared frequency 30-60KHz.
- High dynamic range IR reception (80dB).

### Packaging content:

1. 1 x MD HD L 4K.
2. 1 x Power supply 5V DC 2A.
3. 1 x Jack cable to IR.

## Interfaces and connection:

Interfaces:

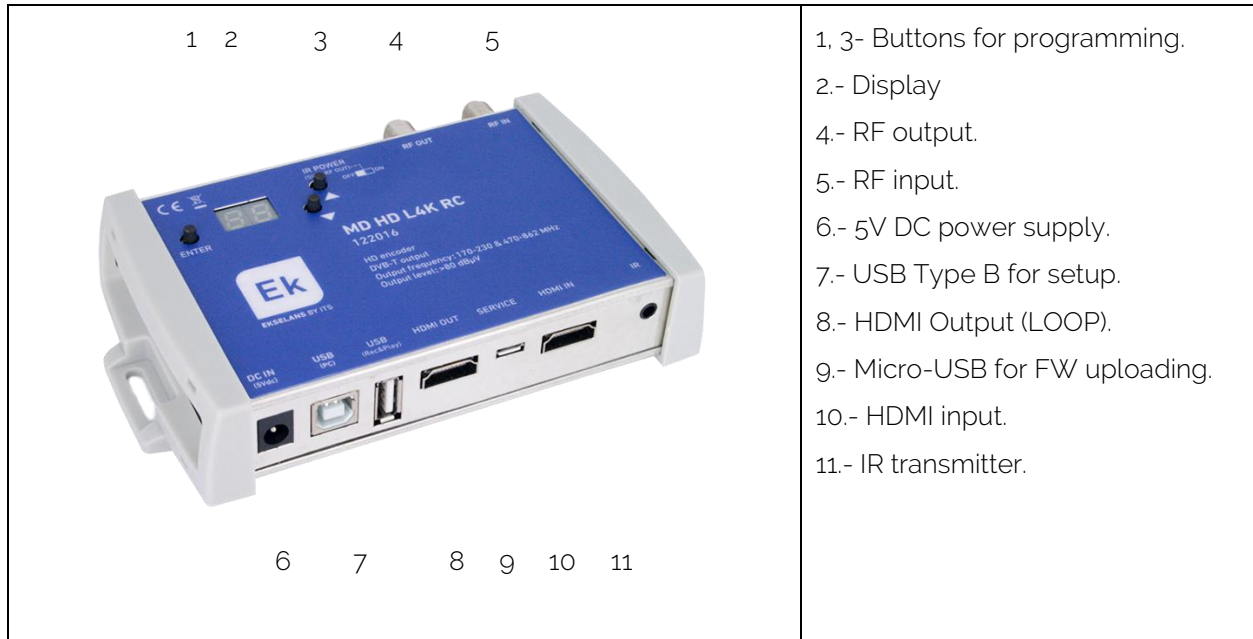
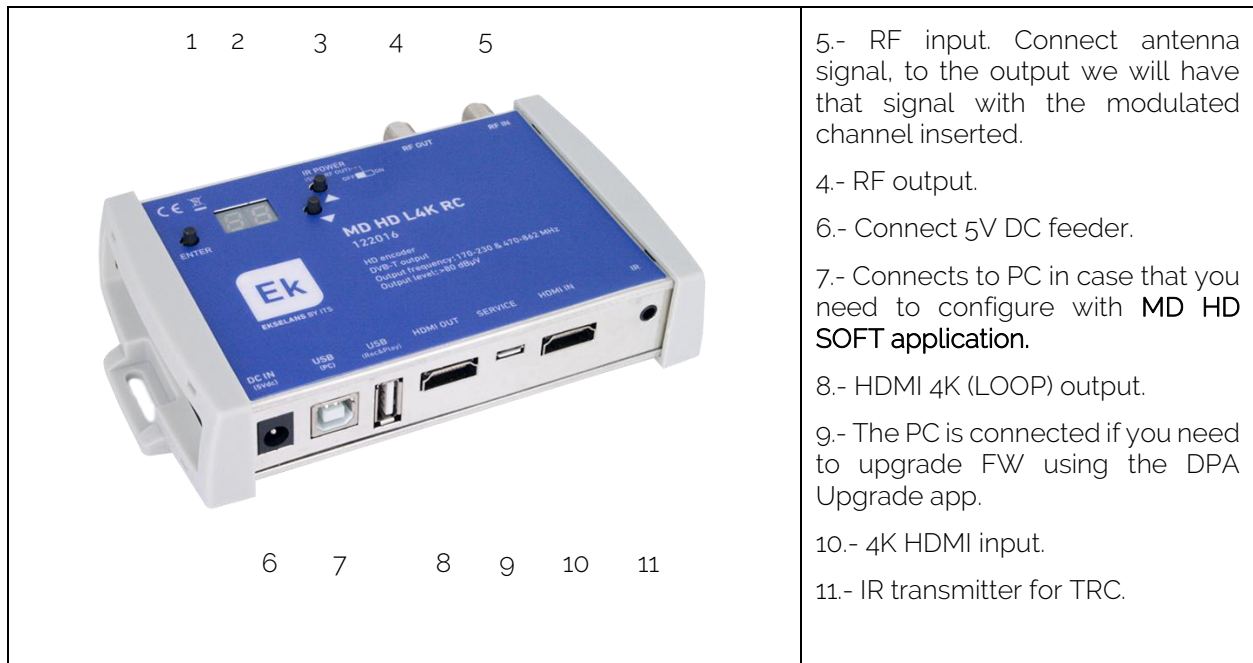
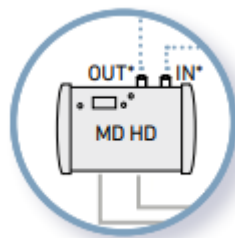
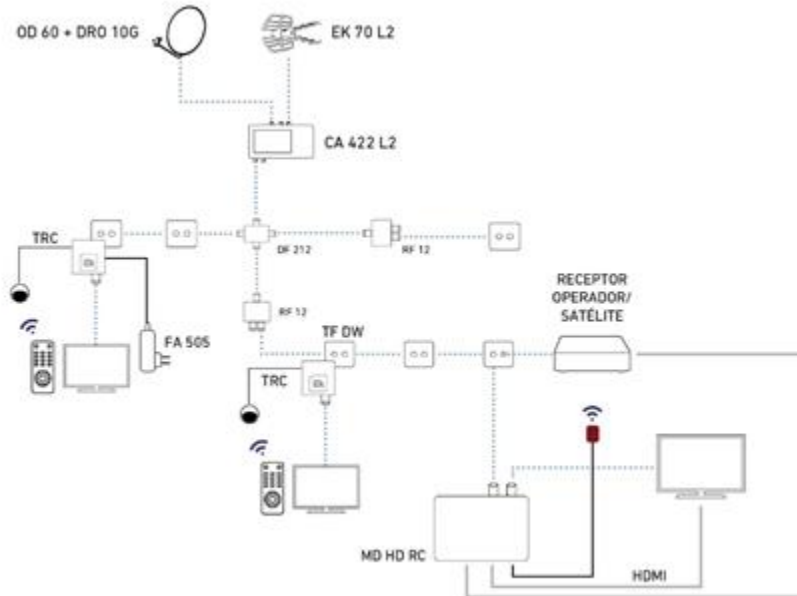
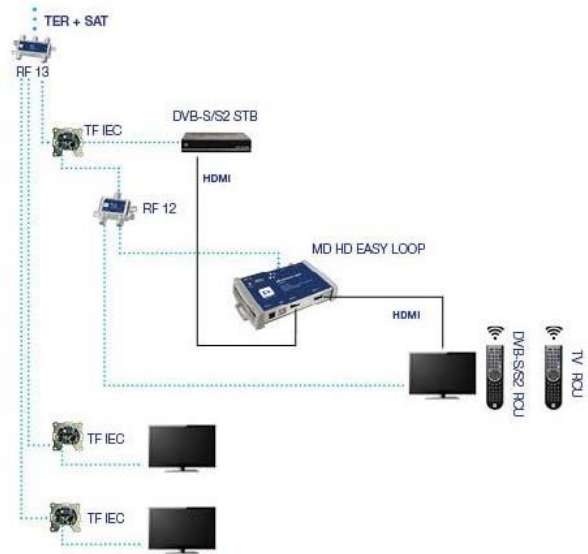
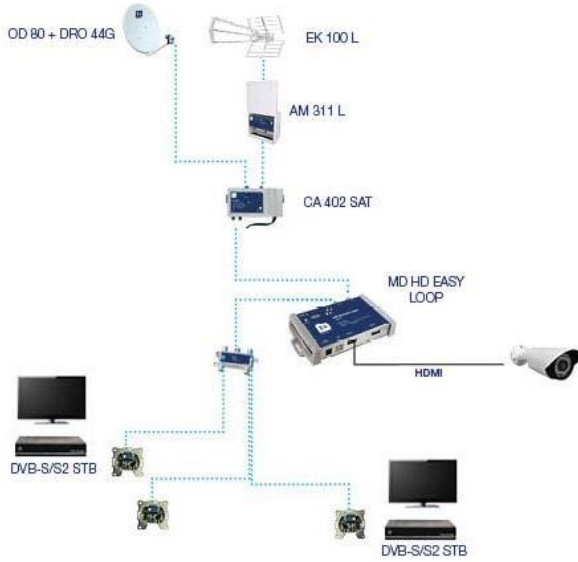



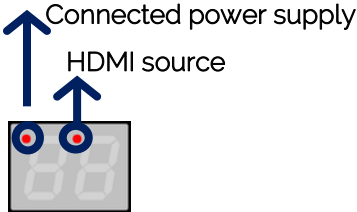
Diagrama de instalación:





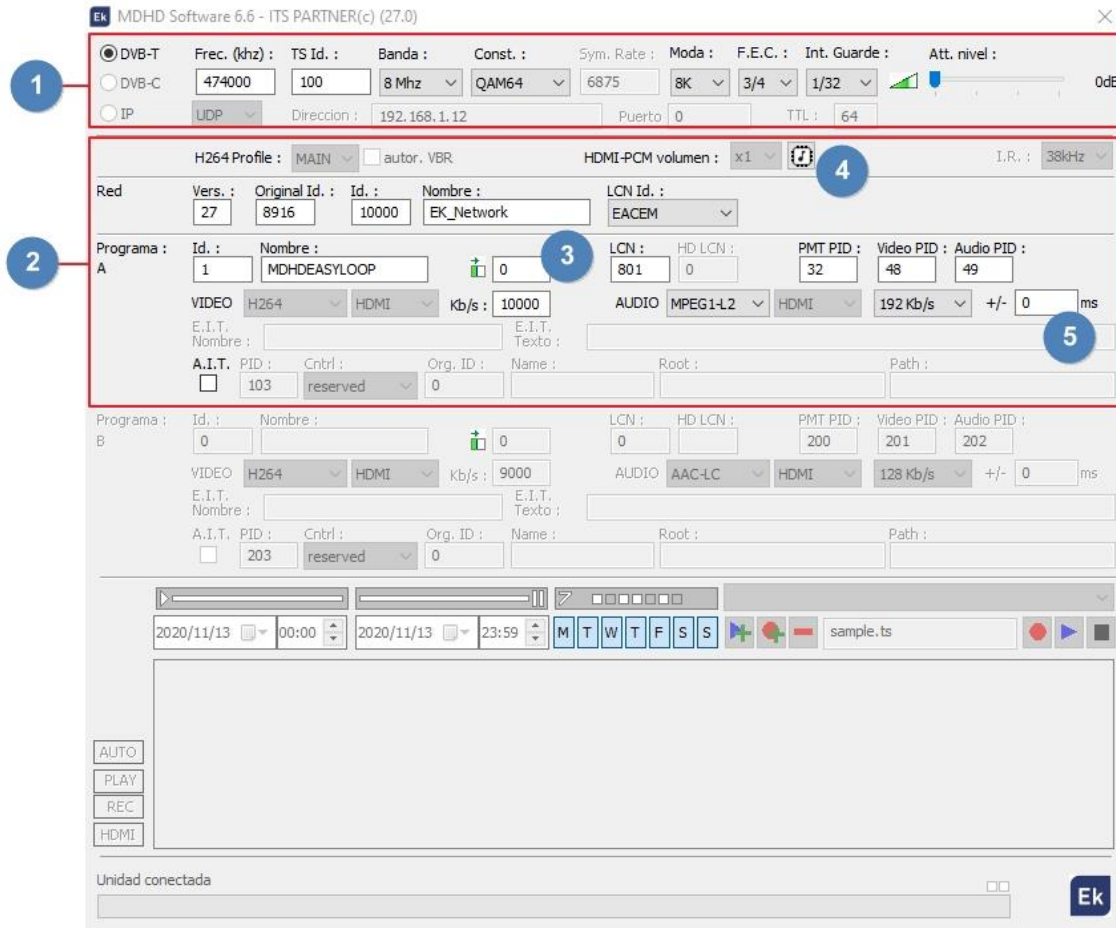
For your convenience, in case you have the modulator near the TV, you could use the **RF IN** input as an output for the TV.

## Basic programming using buttons:

	 <p>Connected power supply HDMI source</p>
<ul style="list-style-type: none"> <li>Press ▲/▼ to change the menu option. <ul style="list-style-type: none"> <li><b>ch</b> Sets the output channel [5... 12+ 21... 69].</li> <li><b>F4</b> Set to "n" if the device connected to HDMI out does <b>not</b> support 4K. Set to "y" if the device connected to HDMI out <b>it</b> supports 4K.</li> <li><b>ir</b> Adjusts the FREQUENCY of the IR carrier [38 / 46 / 56 KHz]. <b>Not usable in this model.</b></li> <li><b>id</b> Modify the program ID [1... 34].</li> <li><b>At</b> Sets the desired attenuation [0... 15dB].</li> </ul> </li> <li>Press <b>ENTER</b> + ▲/▼ in the different options of menu to modify its parameters.</li> </ul>	
<ul style="list-style-type: none"> <li>Press ▲ while the power is connected to defaults. Will be shown <b>r5</b>.</li> <li>Note: If you use more than one modulator for the same receiver or TV, you need to modify the 'Program ID' to make them different.</li> </ul>	

## Advanced programming using MD HD Soft:

- For advanced programming, download the "MD HD Soft" Software from the website [www.ek.plus](http://www.ek.plus).
- Connect modulator and computer via USB cable (Type A/Type B).



1. Settings RF.
2. Video and TS settings.
3. This option will be used to adjust some deviation in the video input signal. With some sources (very rare cases), a green band appears to the left of the image. This option will allow you to move this band until it disappears.
4. Use in case you do not listen to DD by RF output. Clicking this button will write the EDID table.
5. Offset between RF modulated audio and video. **-999ms**, indicates that the audio is almost 1 second ahead of the video.

## Technical specifications:

Reference		MD HD L 4K RC
Code		<b>122016</b>
IN		HDMI 2.0, fully compliant HDCP 2.2 backwards compliant HDMI 1.4
OUT		loop HDMI
<b>VÍDEO</b>		
Video resolution		480i@60Hz, 480p@60Hz, 576i@50Hz, 720p@50/60Hz, 1080p@50/60Hz, 1080i@50/60Hz, 4Kx2K@24/30/50Hz
Data rate		6Gbps por canal
Video compression		H.264
Video rate		15Mbps
<b>AUDIO</b>		
Audio compression		MPEG1-L2, AAC-LC
Audio rate	Kbps	128, 192, 256, 320, 384
<b>MODULACION</b>		
Resolution Video Output		1080p
DVB processing		NIT, PID
DVB configuration		NID, ONID, Network name, TSID, PID, Program name, PMT PID, Video PID, Audio PID
Output frequency	MHz	170-230 & 470-862
Output channel	N.	5..12 + 21..69
Output level	dBµV	>80
Attenuation	dB	0..15
MER	dB	≥33
Bandwidth	MHz	6, 7, 8
Constellation		QPSK, 16QAM, 64QAM
Mode		2K, 8K
FEC		1/2, 2/3, 3/4, 5/6, 7/8
Guard interval		1/4, 1/8, 1/16, 1/32
LCN		EACEM, ITC, NORDIG
Loop RF	dB	-2
<b>INFRARED EXTENDER</b>		
Cable with IR emitter-Freq	KHz	38-46-56
<b>USB</b>		
USB connector		H.264 *.ts files Record & Play
<b>GENERAL</b>		
Supply voltage	Vdc	5 (RF OUT pass optional)
Power consumption	W	< 5
Size	mm	170x130x35
Weight	Kg	0.6



### Channel and Frequency Table (Standard B/G):

- Banda III. 7MHz Bandwidth.
- Banda IV - V. 8MHz Bandwidth.

Band	Channel	Start frequency	End frequency	Central frequency
III	5	174 MHz	181 MHz	177,5 MHz
	6	181 MHz	188 MHz	184,5 MHz
	7	188 MHz	195 MHz	191,5 MHz
	8	195 MHz	202 MHz	198,5 MHz
	9	202 MHz	209 MHz	205,5 MHz
	10	209 MHz	216 MHz	212,5 MHz
	11	216 MHz	223 MHz	219,5 MHz
	12	223 MHz	230 MHz	226,5 MHz

Band	Channel	Start frequency	End frequency	Central frequency
IV	21	470 MHz	478 MHz	474 MHz
	22	478 MHz	486 MHz	482 MHz
	23	486 MHz	494 MHz	490 MHz
	24	494 MHz	502 MHz	498 MHz
	25	502 MHz	510 MHz	506 MHz
	26	510 MHz	518 MHz	514 MHz
	27	518 MHz	526 MHz	522 MHz
	28	526 MHz	534 MHz	530 MHz
	29	534 MHz	542 MHz	538 MHz
	30	542 MHz	550 MHz	546 MHz
	31	550 MHz	558 MHz	554 MHz
	32	558 MHz	566 MHz	562 MHz
	33	566 MHz	574 MHz	570 MHz
	34	574 MHz	582 MHz	578 MHz
	35	582 MHz	590 MHz	586 MHz
	36	590 MHz	598 MHz	594 MHz
	37	598 MHz	606 MHz	602 MHz

Band	LTE	Channel	Start frequency	End frequency	Central frequency	
V		38	606 MHz	614 MHz	610 MHz	
		39	614 MHz	622 MHz	618 MHz	
		40	622 MHz	630 MHz	626 MHz	
		41	630 MHz	638 MHz	634 MHz	
		42	638 MHz	646 MHz	642 MHz	
		43	646 MHz	654 MHz	650 MHz	
		44	654 MHz	662 MHz	658 MHz	
		45	662 MHz	670 MHz	666 MHz	
		46	670 MHz	678 MHz	674 MHz	
		47	678 MHz	686 MHz	682 MHz	
		48	686 MHz	694 MHz	690 MHz	
		2	49	694 MHz	702 MHz	698 MHz
		2	50	702 MHz	710 MHz	706 MHz
		2	51	710 MHz	718 MHz	714 MHz
		2	52	718 MHz	726 MHz	722 MHz
		2	53	726 MHz	734 MHz	730 MHz
		2	54	734 MHz	742 MHz	738 MHz
		2	55	742 MHz	750 MHz	746 MHz
		2	56	750 MHz	758 MHz	754 MHz
		2	57	758 MHz	766 MHz	762 MHz
		2	58	766 MHz	774 MHz	770 MHz
		2	59	774 MHz	782 MHz	778 MHz
		2	60	782 MHz	790 MHz	786 MHz
		1	61	790 MHz	798 MHz	794 MHz
		1	62	798 MHz	806 MHz	802 MHz
		1	63	806 MHz	814 MHz	810 MHz
		1	64	814 MHz	822 MHz	818 MHz
		1	65	822 MHz	830 MHz	826 MHz
		1	66	830 MHz	838 MHz	834 MHz
		1	67	838 MHz	846 MHz	842 MHz
		1	68	846 MHz	854 MHz	850 MHz
		1	69	854 MHz	862 MHz	858 MHz