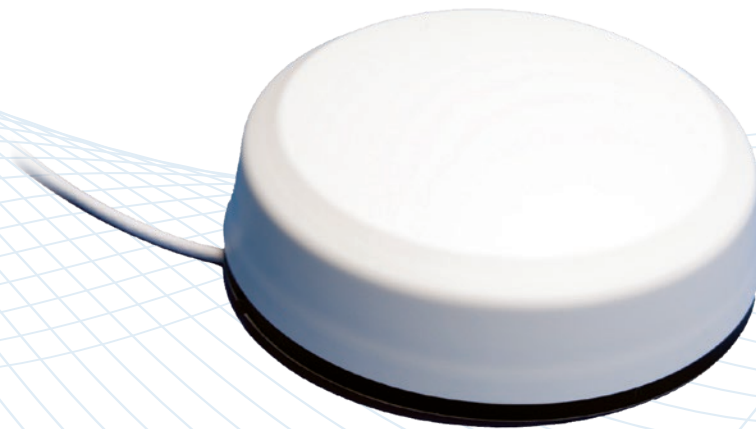


# Smarteq™ SmartDisc™ WiFi Dual Band Antenna, Bluetooth®

WiFi 2.4 GHz and 5 GHz

710374, 710375, 710430, 710431, 710514, 710621



## Description

Low-profile, whipless cellular antenna that delivers reliable WiFi connectivity.

## Technologies

- WiFi
- Bluetooth®

## Features

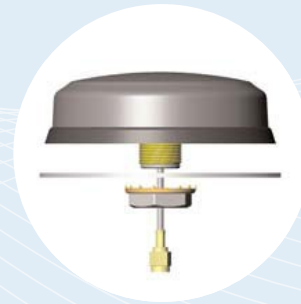
- 2.4 GHz and 5 GHz
- Discreet design with option: hole or adhesive mount
- Optional mounting brackets available
- IP67 class
- DC short
- Option cable approved acc. to ECE-R118
- Available in black or white



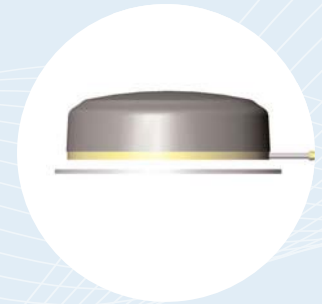
707154 – Optional white angled mounting bracket



201411 – Optional vertical mounting bracket



Hole mount



Adhesive mount

## Smarteq™ SmartDisc™ WiFi Dual Band Antenna, Bluetooth® WiFi 2.4 GHz and 5 GHz

Smarteq™ SmartDisc™ WiFi is a low profile dual band WiFi antenna with durable design. The antenna is ground plane independent and enables flexible and easy installation. Ideal for WiFi applications for M2M, rugged vehicle installations and EV-charging.

### Features

- 2.4 GHz and 5 GHz
- Discreet design with option: hole or adhesive mount
- Optional mounting brackets available
- IP67 class
- DC short
- Option cable approved acc. to ECE-R118
- Available in black or white

### Applications

- Critical Communications
- EV Charging
- In-Building and Enterprise Wireless
- Industrial IoT
- Industrial Kitchens
- Intelligent Transportation
- Smart Cities

### Certifications





## SPECIFICATIONS

# Smarteq™ SmartDisc™ WiFi Dual Band Antenna, Bluetooth® WiFi 2.4 GHz and 5 GHz

### Standard Configurations

Part Number	Housing Color	Installation	Cable Type	Cable Length	Connector
710374	Black	Tape	RG316 grey	2,5 m	SMA-m
710375	Black	Screw	RG316 grey	2,5 m	SMA-m
710430	White	Screw	RG316 grey	0,5 m	Fakra-m/I
710431	Black	Screw	RG316 grey	0,5 m	SMA-m
710514	White	Screw	RG316 white	1,5 m	RP SMA-m
710621	White	Screw	RG316 grey	0,3 m	SMA-m

### Electrical Specifications – RF Antennas (All Models)

Frequency Ranges	Impedance	Polarization	VSWR	Peak Gain Free Space	Peak Gain Ø1m GND	Max. Power
2400-2690 MHz	50Ω	Vertical	< 1.8:1	1 dBi	6 dBi	10W
4900-5900MHz				3 dBi	7 dBi	

### Mechanical and Environmental Specifications (All Models)

#### Physical

Dimensions (D x H)	96 x 26mm
Weight	~190g
Installation*	Hole mount with center screw • Standard screw: Material thickness ≤ 3.5mm • Long screw: Material thickness ≤ 23.5mm  Hole dimension Ø19mm Min. installation radius 1000mm Adhesive mount  *Installation type is defined by part number according to the table above.
Cable	See table above.
Connector	See table above.
Material	PC/PBT/Aluminum alloy
Housing Color	See table above.
Accessories	707154 – White angled bracket 201411 – Vertical bracket
Operating / Storage Temperature	-40°C to +85°C
Certifications	RoHS compliant
IP Class	IP67

**CONTACT US**

**For more information about  
this product contact your  
sales representative or visit  
> [pctel.com/antenna-products](https://pctel.com/antenna-products)**

### **Solving Complex Wireless Challenges**

PCTEL is a leading global provider of wireless technology solutions, including purpose-built Industrial IoT devices, antenna systems, and test and measurement products. Trusted by our customers for 29 years, we solve complex wireless challenges to help organizations stay connected, transform, and grow.



**PCTEL, Inc.**

T: +1 630 372 6800 | [pctel.com](https://pctel.com)

Specifications subject to change without notice. PCTEL®, Smarteq™ and SmartDisc™ are trademarks or registered trademarks of PCTEL, Inc. ©2023 PCTEL, Inc. All rights reserved. (October 2023)