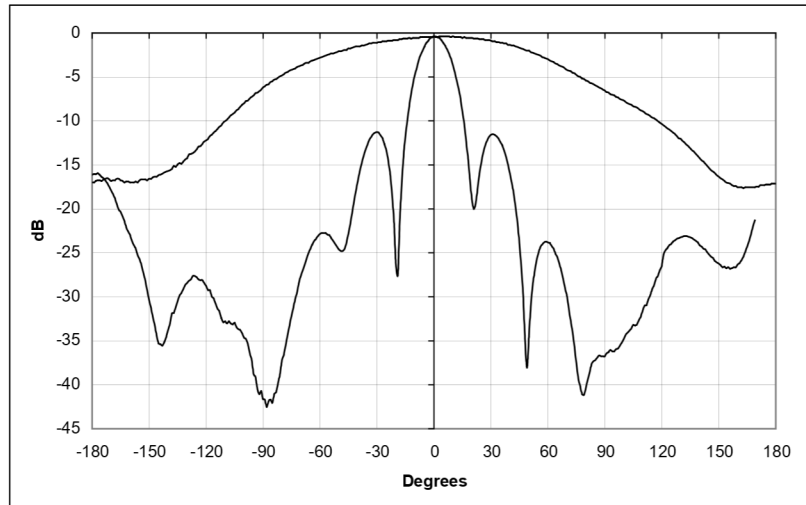
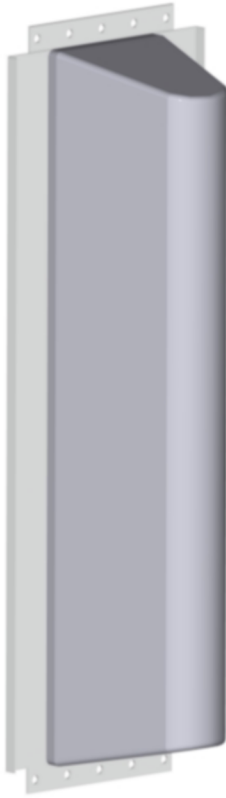


DIRECTIONAL ANTENNA AV4125



Type	AV4125
Frequency	380...430 MHz
Bandwidth	50 MHz
Impedance	50 Ω DC grounded
VSWR	1,3 max
Polarisation	Vertical
Gain	12,5 dBi
E-plane 3 dB beamwidth	17°
H-plane 3 dB beamwidth	132°
Electrical downtilt	None
Front to back ratio	15 dB
Max. Continuous power	0,5 kW
RF-connector	N or 7/16 female
Operational windspeed	40 m/s (default)
Survival windspeed	55 m/s (default)
Wind area	1,2 m ²
Dimensions (H x W x D) (Ø x H)	2100 x 380 x 250 mm
Weight	14,0 kg
Mounting diameter	Ø 30...115 mm pipe
Materials	Aluminium Glassfiber radome Glass reinforced polycarbonate/PE
Options	-

