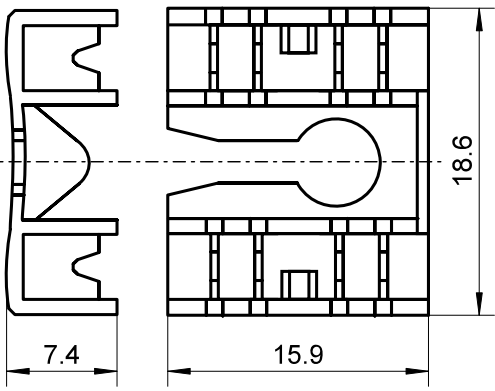


1 2 3 4 5 6 7 8 9 10 11 12 13 14

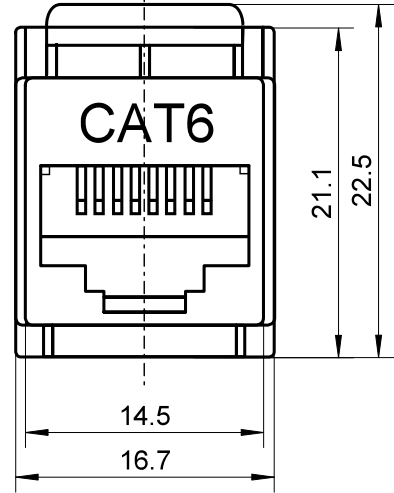
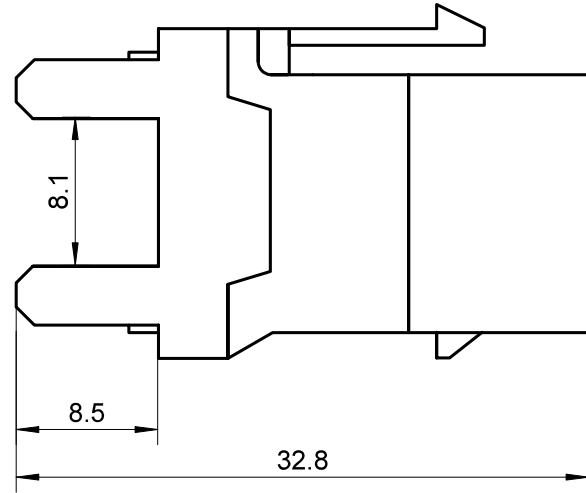
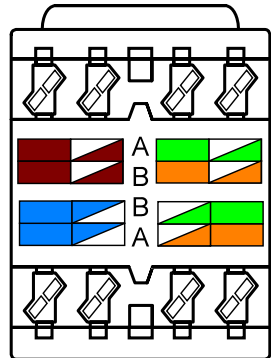
A  
B  
C  
D  
E  
F  
G  
H  
I  
J

A  
B  
C  
D  
E  
F  
G  
H  
I  
J

Kappe  
Cap



Terminal  
Terminal



- KeyStone Jack CAT 6
- Anschlüsse: LSA > RJ45 (8P8C)
- Material: ABS
- TIA 568A/B
- Standard: Cat6 (250MHz)
- Gewicht: 7,3g
- Version: Snap in
- Anschlüsse sind TIA 568A/B farbkodiert.
- Zum Einbau in Modular-Verteilerfelder bis 24 Port und Anschlussdosen.
- Schirmung: UTP ungeschirmt
- RoHS-konform

- *KeyStone Jack CAT 6*
- *Connectors: LSA > RJ45 (8P8C)*
- *Material: ABS*
- *TIA 568A/B*
- *Standard: Cat6 (250MHz)*
- *Weight: 7.3g*
- *Version: Snap in*
- *Connectors have TIA 568A/B color code.*
- *Can be mounted in Keystone panels up to 24 ports or wall outlets.*
- *UTP unshielded*
- *RoHS compliant*

Änderungen

Datum	Name	gez.:	Datum	Name
		gez.:	31.10.2013	tf
		gepr.:	31.10.2013	tf
		Norm.:		
Änderungen vorbehalten / Subject to change				

Bezeichnung		Blatt
KeyStone Jack CAT 6		
Zeichnungs-Nr.:		von
95740		



1 2 3 4 5 6 7 8 9 10 11 12 13 14