

**P-22/460**



**P-28 NMT/GSM**

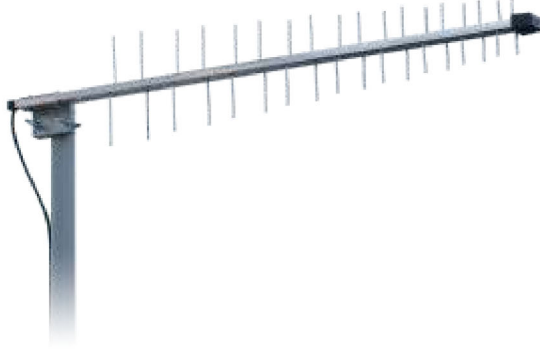
### Technical data / Tehnični podatki

Type Tip	Channels (frequency) Kanali (frekvenca)	No. of elements Število elementov	Gain Dobitek	F/B ratio Razmerje naprej-nazaj	Beam width Širina glav. lista	Max. VSWR Maks. VSWR	Length Dolžina antene	Packing Pakiranje		
								pcs. kom.	cm	m <sup>3</sup>
P-16 GSM*	GSM (850 - 960 MHz)	16	9 dB(i)	20 dB	Horiz. 68° Vert. 64°	1.6 : 1	49.5 cm	15	111 x 34 x 27	0.102
P-18 NMT*	NMT (380 - 500 MHz)	18	10 dB(i)	21 dB	Horiz. 78° Vert. 60°	<1.5 : 1	97.5 cm	10	100 x 78.5 x 17	0.133
P-18 / 460*	NMT (450 - 470 MHz)	18	11 dB(i)	23 dB	Horiz. 76° Vert. 53°	<1.5 : 1	100 cm	10	117 x 37 x 29	0.126
P-22 / 460*	NMT (450 - 470 MHz)	22	12 dB(i)	25 dB	Horiz. 49° Vert. 73°	<1.5 : 1	123.5 cm	10	144 x 33.5 x 30	0.145
P-28 NMT/GSM*	NMT/GSM (380 - 960 MHz)	28	8 - 10 dB(i)	22 dB	Horiz. 80° Vert. 62°	<1.5 : 1	82 cm	10	94 x 47 x 34	0.150
P-36 GSM*	GSM (850 - 960 MHz)	36	11 dB(i)	26 dB	Horiz. 48° Vert. 57°	<1.5 : 1	100 cm	10	111 x 34 x 27	0.102
P-52 GSM/DCS*	GSM (850 - 960 MHz) DCS (1710 - 1880 MHz)	52	GSM: 9 dB(i) DSC: 10.5 dB(i)	25 dB	Horiz. 45° Vert. 36°	GSM: <1.5 : 1 DSC: <2 : 1	93 cm	10	111 x 34 x 27	0.102
P-54 GSM/UMTS*	GSM (850 - 960 MHz) DCS (1710 - 1880 MHz) UMTS (1920 - 2170 MHz)	54	10 - 12 dB(i)	24 dB	Horiz. 43° Vert. 34°	<1.6 : 1	56.5 cm	15	111 x 34 x 27	0.102

\* Standard antenna has 10 m coax. cable and FME female connector / Standardna antena ima 10 m koaks. kabla in FME ženski konektor

# Professional Antennas - NMT, GSM

## Profesionalne antene - NMT, GSM



P-36 GSM



P-52 GSM/DSC

### Gain diagrams / Grafi dobitkov

