



## PA-81

### Stainless steel bracket with brass mount

 The PA-81 bracket is designed for side mounting. Made of stainless steel with brass mount, it combines high resistance with easy installation. 1" x 14 thread.

 Staffa per installazione laterale in acciaio inossidabile, garantisce elevata resistenza unita a una estrema facilità di montaggio. Attacco filettato standard 1" x 14 in ottone.


 Die PA-81 Masthalterung wurde für die Seitenmontage entworfen. Aus rostfreiem Edelstahl mit einer Messingsfassung kombiniert sie hohe Widerstandskraft mit einfacher Installation. 1" Gewinde mit 14 Gewindegängen.


(code: PF AC NBASE008)




## PA-83

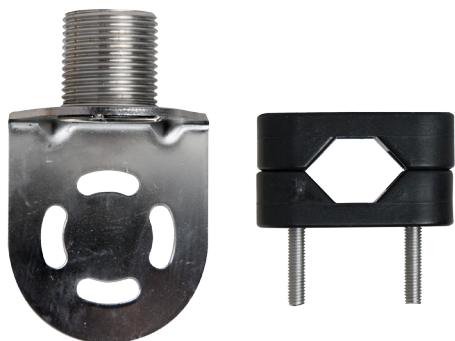
### Stainless steel rail mount

 The PA-83 is a stainless steel bracket designed for rail and wall mount. Its special design allows the bracket to be installed on both round and squared rails up to 25 mm diameter. Standard 1" x 14 thread. It comes supplied with mounting set.

 La PA-83 è una staffa in acciaio inox progettata per montaggio su pulpito o su parete. Il suo particolare design costruttivo ne permette l'applicazione su tubolari a circonferenza rotonda o quadrata fino a un massimo di 25 mm di diametro. Attacco standard 1" x 14 filetti. Viene fornita unitamente al set di montaggio.


 Die PA-83 ist eine Reelings-/Wandhalterung aus rostfreiem Edelstahl. Das spezielle Design erlaubt eine Montage sowohl an einer runden, als auch an einer eckigen Reiling, bis zu 25 mm Diameter. Standard 1" Gewinde und 14 Gewindegänge. Montage Set inklusive.


(code: PF AC NBASE017)




## PA-41

### Detachable chrome brass rail mount

 Resistant chrome brass rail mount, quick and easy to install. Designed for installation on 20 mm to 25 mm horizontal rails. 1" x 14 thread, detachable by unscrewing the lock.

 La base PA-41, costruita interamente in ottone cromato, garantisce una installazione facile e veloce su elementi tubolari orizzontali con diametro compreso tra 20 mm e 25 mm. Attacco filettato 1" x 14, asportabile mediante svitamento del fermo laterale.

 Widerstandsfähige Relingshalterung aus verchromtem Messing, schnell und leicht zu installieren. Entworfen für die Montage an 20 mm und 25 mm horizontalen Relings. 1" Gewinde mit 14 Gewindegängen, abnehmbar durch lösen der Sperrvorrichtung.

(code: PF AC NBASE009)

