

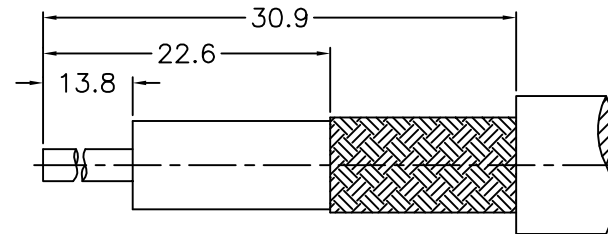
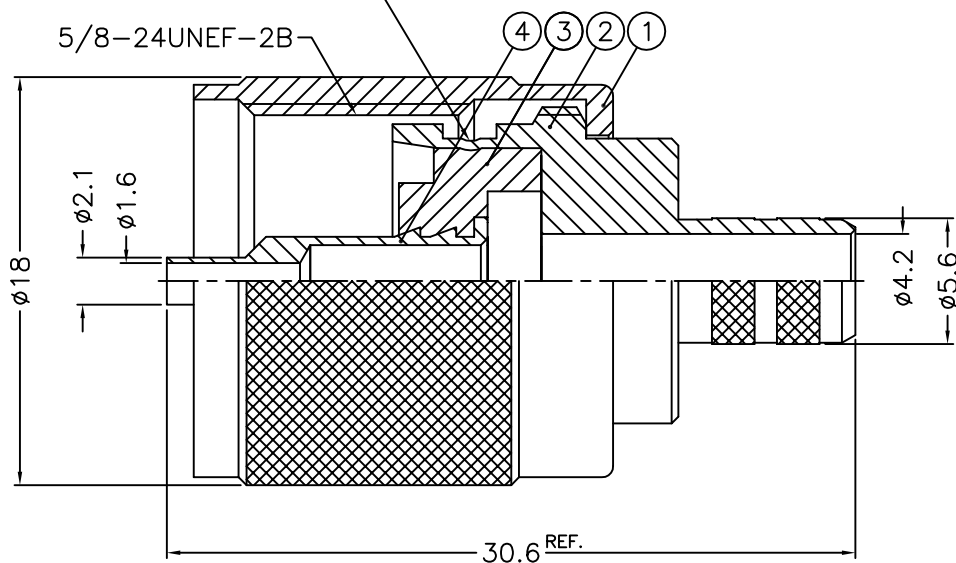
1 2 3 4 5 6 7 8

REVISIONS		
ISS	ZONE	DESCRIPTION\PER REQUEST\DATE

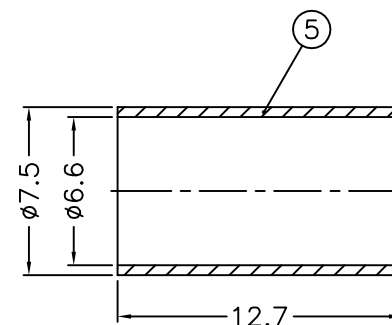
REMARK:1. NO.3 MUST WITHSTAND A 6 lbs. MIN. PUSHOUT FORCE FROM NO.2 AFTER STAKING OPERATION  
 2. REMARK 1 IS MAINTAINED BY STAMPING THE SIX POINTS SHOWN ON THE DRAWING WITHOUT PUNCTURING NO.2

(1. 打六點後零件3由零件2推出至少必須承受6磅推力)  
 (2. 打六點後除需符合備註1要求外且不可擊穿零件2)

STAKE IN 6 PLACES EQUALLY SPACED 60° APART (打六點 間隔 60°) (SEE REMARK 1,2)



RECOMMENDED CABLE STRIPPING DIM'S (建議剝線尺寸)



1. CRIMPED FERRULE HEX CRIMP SIZE .255"  
 2. CRIMPED CONTACT PIN HEX CRIMP SIZE .068"

NOTES: FINISH (PLATING THICKNESS IN MICRO-INCHES)

- 1. BRASS
- 2. NICKEL PL. 100 MIN. THICK OVER COPPER PL. 50 MIN. THICK
- 3. GOLD PL. 3 MIN. THICK OVER NICKEL PL. 50 MIN. THICK OVER COPPER PL. 50 MIN. THICK
- 4. TEFLON

NO.	DESCRIPTION	MATERIAL	FINISH	Q'TY	DRAWING NO.	SCALE	3/1	ISSUE	A	PART NO.	APPROVED	DATE	TITLE
5	FERRULE	NOTE 1	NOTE 2	1	FR-66-75-127	DIMENSIONS ARE IN MILLIMETERS				PART NO.  APPROVED DATE 07-09-'13  CHECKED DATE 07-09-'13  DRAWN DATE 07-09-'13	TITLE UHF CRIMP PLUG (FOR 8X, LMR240 CABLE)		
4	CONTACT PIN	NOTE 1	NOTE 3	1	600-1121A1-4 -1.6	UNLESS OTHERWISE SPECIFIED TOLERANCES						DRAWING NO. 600-1121A1-16-50	
3	INSULATOR	NOTE 4	NATURAL	1	600-1121A1-3 -50T	0.5-6 = ±0.2							FILE NO. R:\D\G\DWG\600\1121A1\16\50-1
2	BODY	NOTE 1	NOTE 2	1	600-1121A1-2 -16	6-30 = ±0.4							
1	SHELL	NOTE 1	NOTE 2	1	600-1121A1-1	30-120 = ±0.6							
						120-315 = ±1							
						315-1000 = ±1.6							
						1000-2000 = ±2.4							

1 2 3 4 5 6 7 8

F

E

D

C

B

A

F

E

D

C

B

A