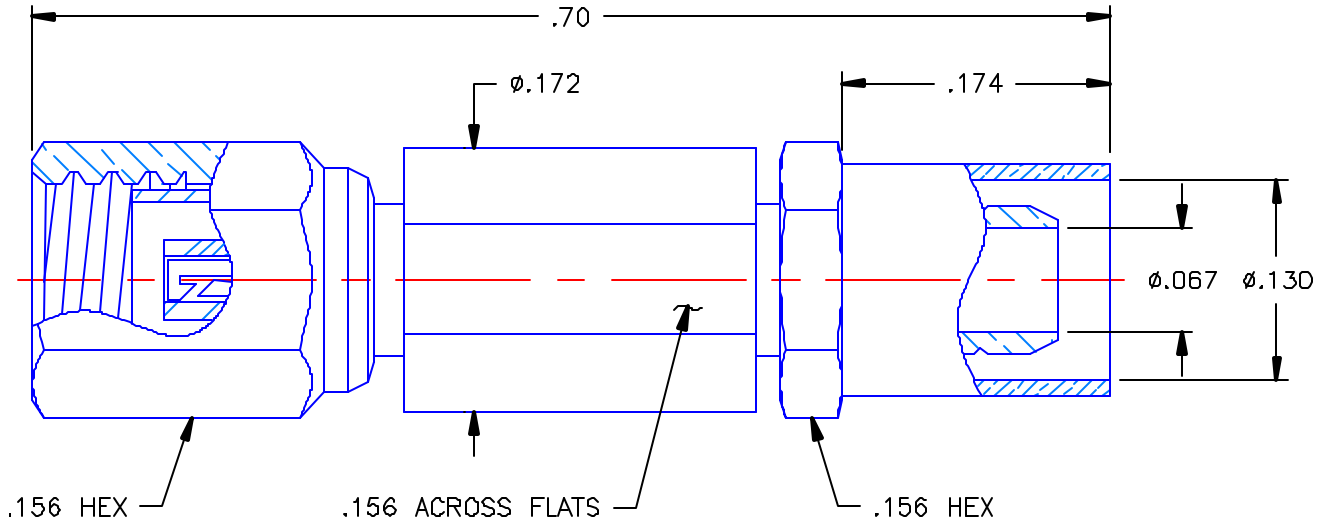


REVISIONS			
REV	DESCRIPTION	DATE	APPROVED
-	INITIAL RELEASE	05/16/03	A.D.M.



**PROPRIETARY INFORMATION**  
**NOT TO BE RELEASED**  
**WITHOUT WRITTEN PERMISSION**  
**FROM AN AUTHORIZED**  
**REPRESENTATIVE OF**  
**APPLIED ENGINEERING PRODUCTS**


**NOTES:**

**MATERIALS:**

- INSULATORS = VIRGIN WHITE TEFLON PER ASTM D1710, GRADE 1, TYPE I, CLASS "B".
- CRIMP NUT = BRASS PER ASTM B16, ALLOY C36000, TEMPER H02.
- CRIMP SLEEVE = SEAMLESS LOWLEAD BRASS TUBE, ALLOY 330, SOFT ANNEAL TEMPER, .025/.060 GRAIN SIZE OR SEAMLESS COPPER TUBE PER ASTM B75, TYPE C12000, TEMPER: LIGHT ANNEAL Q50 EXCEPT YIELD STRENGTH.
- SHRINK SLEEVE = RNF100 (NOT SHOWN)
- ALL OTHER METAL PARTS = BERYLLIUM COPPER PER ASTM B196, ALLOY C17300, TEMPER TD04.

**FINISHES:**

- CONTACT = GOLD PLATE PER MIL-G-45204, TYPE II, CLASS 1, GRADE C, OVER .00010 TO .00020 STRESS FREE SULFAMATE NICKEL PER QQ-N-290.
- ALL OTHER METAL PARTS = GOLD PLATE PER MIL-G-45204, TYPE II, CLASS Q, GRADE C, OVER .00010 TO .00020 COPPER STRIKE PER MIL-C-14550.

UNLESS OTHERWISE SPECIFIED DIMENSIONS ARE IN INCHES TOLERANCES ON		DWN. A.D.M.	DATE 05/15/03	 <b>APPLIED ENGINEERING PRODUCTS</b> 104 John W. Murphy Dr. New Haven, CT 06513
		CHKD: D.N.	DATE 05/16/03	
DECIMAL	ANGLE	APVD: D.J.C.	DATE 05/16/03	<b>SSMC STRAIGHT FEMALE PLUG</b> <b>CRIMP TYPE</b> <b>FOR RG-316DS CABLE</b>
REFERENCE:	MATERIALS & FINISHES: SEE NOTES	SIZE A	FSCM NO. 19505	
ORIGINATOR: A.D.M. DATE: 05/15/03		SCALE 8:1		REV -
		SHEET 1 OF 1		

7002-1572-019