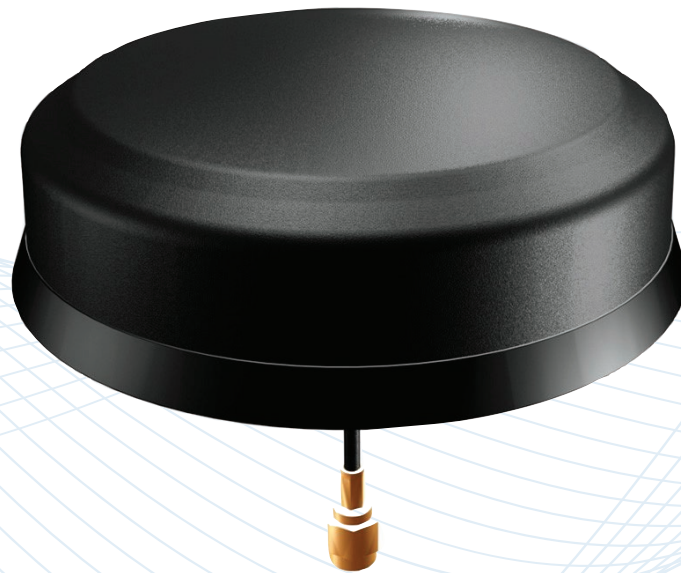


Smarteq™ SmartDisc™ Combi

Combination Antennas - Cellular + GPS

710027, 710112, 710161, 710202,
SDB-02-04-01-07S and SDW-02-04-01-07S



Description

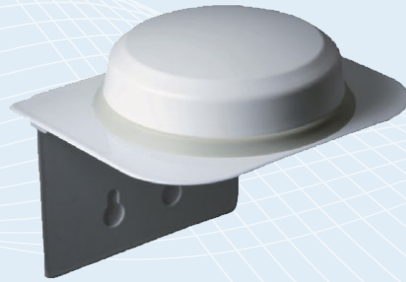
Low-profile, whipless combination antenna that delivers reliable RF performance.

Technologies

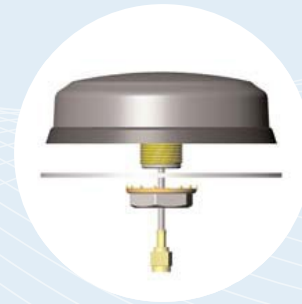
- 2G/3G/4G
- GPS

Features

- Easy installation with hole mount
- Durable design for a range of M2M, IoT, and vehicle installations
- Patented technology



707154 - Optional white angled mounting bracket



Hole mount

Smarteq™ SmartDisc™ Combi Antenna

Comination Antennas - Cellular + GPS

The Smarteq™ SmartDisc™ Combi is versatile, low-profile antenna with durable design. The antenna is ground plane independent enabling flexible and easy installation.

Features

- Cellular: 790-960MHz and 1710-2690MHz
- GPS: 1575.42MHz
- Discreet design with center screw installation
- IP67 class
- Cable approved acc ECE-R118
- Designed in Sweden with Patented technology

Applications

- Off-Highway Vehicle (OHV)
- ECU/Gateway
- M2M
- Public Safety
- Smart Metering
- Smart City
- EV-chargers
- Vending machines
- Parking meters

Certifications





SPECIFICATIONS

Smarteq™ SmartDisc™ Combi Antenna

Comination Antennas - Cellular + GPS

Standard Configurations

Part Number	Cable Color	Installation Type	Cable Length / Type		Connector Type	
			Cellular	GPS	Cellular	GPS
710027	Black	Long screw	0.2m / RG316	0.3m / RG316	FME(m)	SMA(m)
710112	Black	Standard screw	3.5m / LL58	3.5m / RG316	FAKRA(f)	FAKRA(f)
710148	Black	Standard screw	0.25m / RG316 LSOH	0.25m / RG316 LSOH	MCX(m) angle	MCX(m) angle
710161	Black	Standard screw	3.0m / RG316	3.0m / RG316	SMA(m)	SMA(m)
710202	Black	Standard screw	0.5m / LL58	0.5m / RG316	FAKRA(f)	FAKRA(f)
SDB-02-04-01-07S	Black	Standard screw	0.2m / RG316	0.3m / RG316	FME(m)	SMA(m)
SDW-02-04-01-07S	White	Standard screw	0.2m / RG316	0.3m / RG316	FME(m)	SMA(m)

Electrical Specifications

	Cellular	GPS
Frequency Ranges	790-960MHz / 1710-2690MHz	1575.42MHz
Impedance	50Ω	50Ω
Polarization	Vertical	RHCP
VSWR	3:1	1.5:1
Gain	790-960MHz: 2.15dBi 1710-2690MHz: 3.15dBi	GPS Passive: 5dBic @ zenith GPS Active: 27dB
Max. Power	10W	10W
Supply Voltage	3.3-5V	3.3-5V

Mechanical and Environmental Specifications (All Models)

Physical

Dimensions (D x H)	96 x 26mm
Weight	~190g
Installation*	Hole mount with center screw <ul style="list-style-type: none"> • Standard screw: Material thickness ≤ 3.5mm • Long screw: Material thickness ≤ 23.5mm Hole dimension Ø19mm Min. installation radius 1000mm <i>*Installation type is defined by part number according to the table below.</i>
Cable	Cable type and length is defined by part number according to table below.
Connector	Connector type is defined by part number according to the table to below.
Material	PC/PBT/Aluminum alloy
Housing Color	Black or White
Accessories	707154 – White angled bracket
Operating / Storage Temperature	-40°C to +85°C
Certifications	RoHS compliant; Certified according to 2014/53/EU Radio Equipment Directive (RED)
IP Class	IP67

CONTACT US

**For more information about
this product contact your
sales representative or visit
> pctel.com/antenna-products**

Solving Complex Wireless Challenges

PCTEL is a leading global provider of wireless technology solutions, including purpose-built Industrial IoT devices, antenna systems, and test and measurement products. Trusted by our customers for 29 years, we solve complex wireless challenges to help organizations stay connected, transform, and grow.



PCTEL, Inc.

T: +1 630 372 6800 | pctel.com

Specifications subject to change without notice. PCTEL®, Smarteq™ and SmartDisc™ are trademarks or registered trademarks of PCTEL, Inc. ©2023 PCTEL, Inc. All rights reserved. (October 2023)