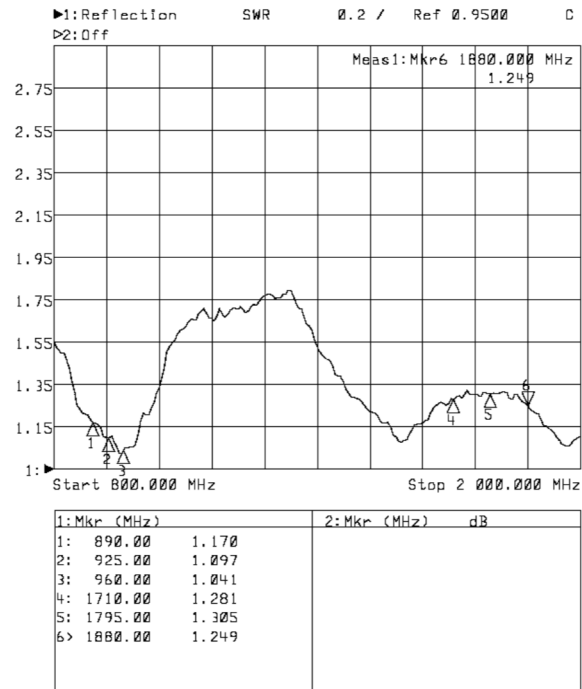
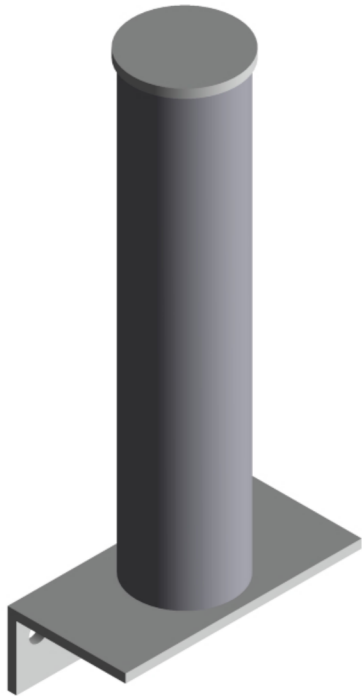


## DUAL BAND ANTENNA AV1950



Type	AV1950
Frequency	870...960 MHz 1710...2170 MHz
Bandwidth	90/460 MHz
Impedance	50 Ω
VSWR	1,5 typical
Polarisation	Vertical
Gain	3 dBi
E-plane 3 dB beamwidth	70°
H-plane 3 dB beamwidth	360°
Electrical downtilt	None
Front to back ratio	- dB
Max. Continuous power	0,5 kW
RF-connector	N female or 7/16 female
Operational windspeed	40 m/s (default)
Survival windspeed	55 m/s (default)
Wind area	0,2 m <sup>2</sup>
Dimensions (H x W x D, Ø)	360 x 160 x 80 mm, 60 mm
Weight	2,5 kg
Mounting diameter	Ø 30...115 mm pipe
Materials	Aluminium Glassfiber radome Glass reinforced PE Brass dipole element
Options	Colour