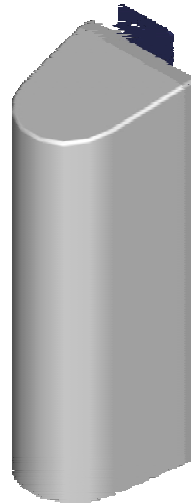


DIRECTIONAL ANTENNA AV4121



Type	AV4121
Frequency	380...430 MHz
Bandwidth	50 MHz
Impedance	50 Ω DC grounded
VSWR	1,5 max
Polarisation	Vertical
Gain	6 dBi
E-plane 3 dB beamwidth	60°
H-plane 3 dB beamwidth	170°
Electrical downtilt	None
Front to back ratio	15 dB
Max. Continuous power	0,5 kW
RF-connector	N or 7/16 female
Operational windspeed	40 m/s (default)
Survival windspeed	55 m/s (default)
Wind area	0,6 m ²
Dimensions (H x W x D) (\varnothing x H)	500 x 160 x 180 mm
Weight	1 kg
Mounting diameter	\varnothing 30...115 mm pipe
Materials	Aluminium Glassfiber radome Glass reinforced polycarbonate/PE
Options	-