

# Ultra Wideband MiMo Antenna

Installation Guide & Safety Information



Maximise your Connectivity,  
Minimise your Antennas

## 1. Introduction

The DMM antenna is a 2x2 MIMO (multiple input multiple output) / diversity capable accessory antenna designed to improve reception for 2G / 3G/ 4G and some 5G modem devices.

## 2. Positioning the Antenna

The DMM is designed to operate with MIMO enabled modems which are able to take advantage of the scattered signal paths which exist in everyday indoor environments. For this reason the user can be very flexible about where they position the antenna. The antenna is omni-directional and does not need to be facing any particular direction to operate. The antenna should not be positioned too close to metal objects as this may affect performance.

### 2.A. Desk mounting

The DMM can be easily desk mounted using the integrated fold out feet as shown at fig. 1. Simply fold out both feet and position the antenna as desired. The feet can then be re-stowed for transport.

### 2.B. Screen clip mounting

The DMM can be screen clip mounted using the two supplied clips. Simply take the clips and slide them upwards into the keyhole notches on either side of the base of the antenna using a firm steady action as shown in fig. 2. When the screen mount clips are installed the desk mount feet cannot be used so the screen clips should be removed and stored safely if the user wishes to subsequently desk mount the antenna.

### 2.C. Screen clip mounting

The DMM can be suction mounted to a window or other smooth surface utilising the supplied suction cup. Simply insert the suction cup into the central keyhole slot as shown in fig.3. Proceed to mount the antenna by pressing it firmly onto the desired surface until a firm grip is achieved. To dismount the antenna hold the suction cup firmly and slide the antenna upwards dismounting the antenna from the suction cup. The suction cup can then be removed from the mounting surface with ease.

*Please note that not all surfaces are suitable for suction mounting and that this method is for temporary mounting only. The antenna should not be suction mounted to metal surfaces.*

## 3. Routing the cables

Route the dual coaxial cables from the antenna to the modem. The cables should not remain bunched or tightly wound as this may affect performance.

## 4. Connecting the antenna

The antenna can now be connected to the modem using the integrated connectors or by utilising any supplied adapter leads.

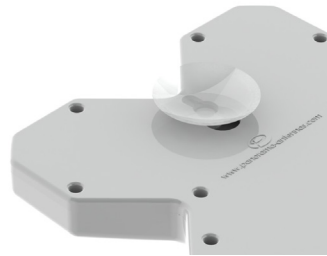
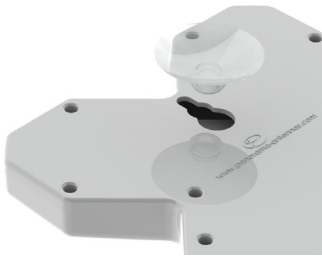
Figure 1 - Fold out desk stand feet



Figure 2 - Installing screen clips



Figure 3 - Installing suction cups



## WARRANTY

This accessory is guaranteed to be free from defects in the material and workmanship for 12 months from the date of purchase. If your accessory is found to be faulty please return the product to Panorama Antennas with proof of purchase. This warranty excludes normal wear and tear. This does not affect your statutory rights. **THIS WARRANTY DOES NOT APPLY IN AUSTRALIA.**

## IMPORTANT SAFETY NOTES



**RF Safety Note** – Ensure that the antenna is mounted in such a way that no person is likely to be within a distance of 30cms (12”) from the antenna during use. Ensure that the antenna is used only as supplied the co-axial cables should not be cut shorter or otherwise modified.



**General Safety Note** - Make sure that the product is mounted so that it cannot fall and cause injury. Do not chew the product or put it in your mouth. Do not leave children unsupervised with the product or packaging.



Waste electrical products should not be disposed of with household waste. All electronic products with the WEEE logo must be collected and sent to approved operators for safe disposal or recycling. Please recycle where facilities exist. Many electrical/electronic equipment retailers facilitate “Distributor Take-Back scheme” for household WEEE. Check with your Local Authority or electronic retailers for designated collection facilities where WEEE can be disposed of for free.



**RoHS 2** compliance is declared per Directive 2011/65/EU and its subsequent amendments with exemption 6.c applied. This product contains lead as an alloying element in a copper alloy containing up to 4% lead by weight.

**REACH** (Registration, Evaluation, Authorisation and Restriction of Chemicals, EC 1907/2006)

This product contains Lead (CAS No. 7439-92-1) which is classified as an SVHC (Substance of Very High Concern) as being toxic to reproduction under Article 57c. of REACH. **Do not chew parts or put them in mouth, keep away from unsupervised children. Dispose of parts as WEEE waste do not send to landfill.**

PANORAMA  ANTENNAS

[www.panorama-antennas.com](http://www.panorama-antennas.com)

SW3-225 - v2 [19.03.19]