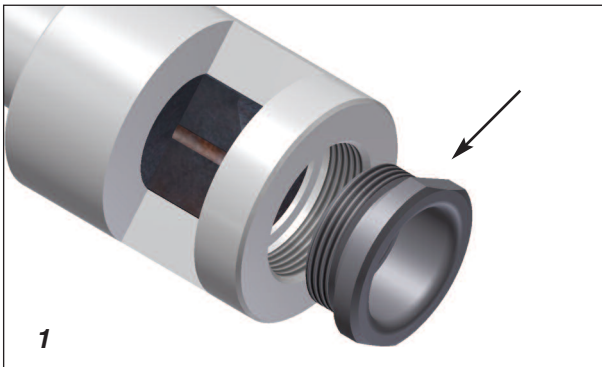
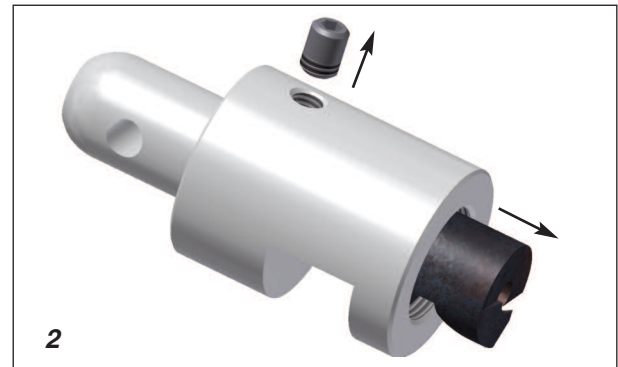


To replace the optionally available replacement blades on the SPTC50AV12, proceed as follows:

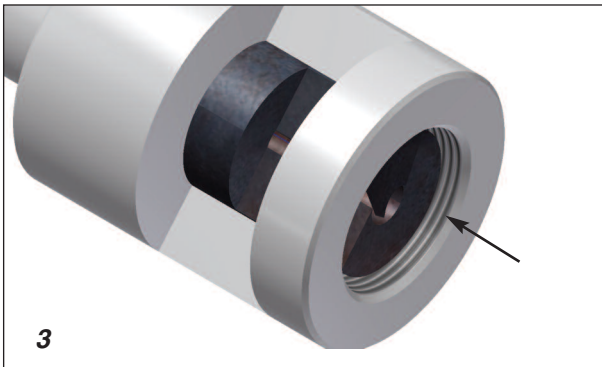
Removable Front Part of the SPTC50AV12



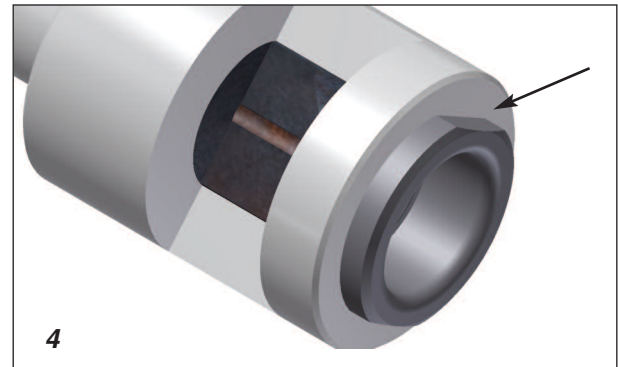
Loosen the Nut



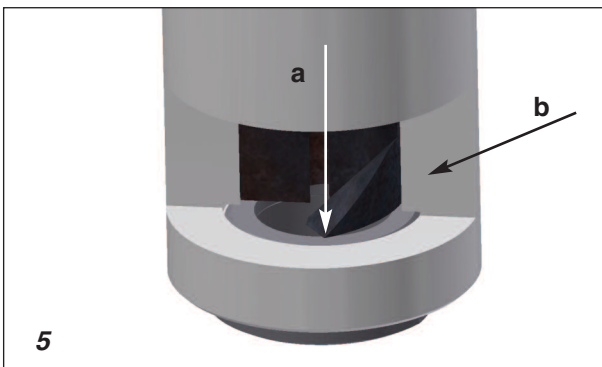
Loosen the screw and remove the Cutter from the Body



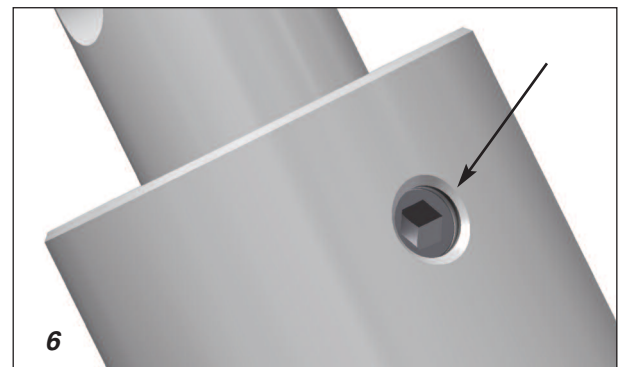
Slide new Cutter into the Body



Tighten the Nut



a. Hold the Body upside-down and slide the Cutter against the Nut
b. Rotate the cutter to align it with the Body



Tighten the screw to secure the Cutter