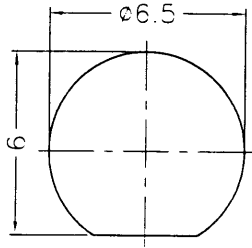


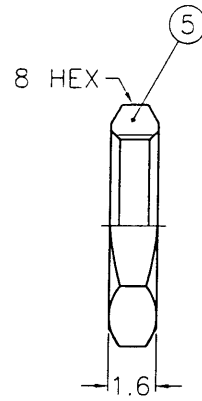
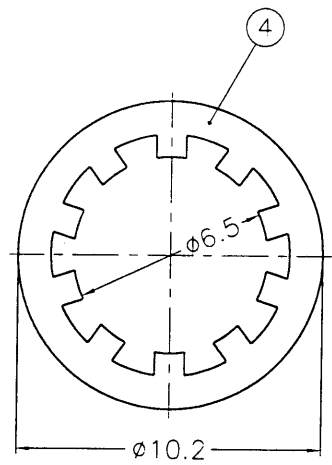
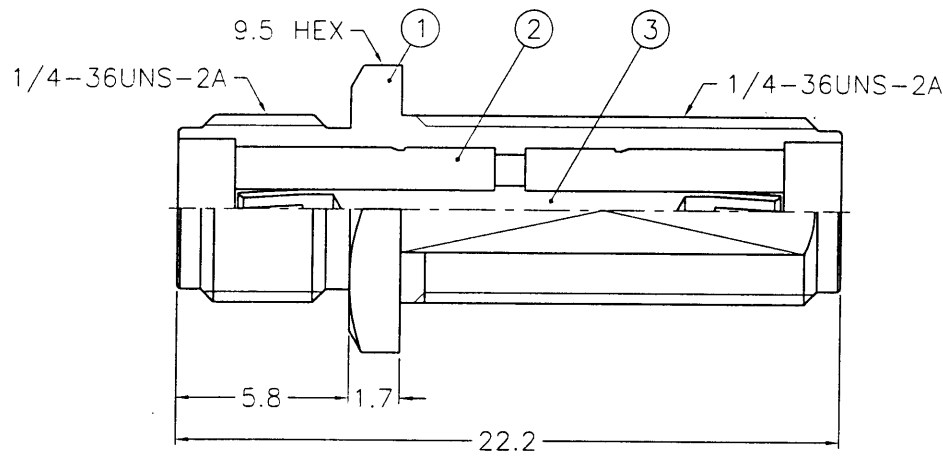
1 2 3 4 5 6 7 8

REVISIONS			
ISS	ZONE	DESCRIPTION	REF REQUEST DATE



RECOMMENDED MOUNTING HOLE
(建議架設孔)

業務部



NOTES: FINISH (PLATING THICKNESS IN MICRO-INCHES)
 1. BRASS PER QQ-B-626
 2. BRASS PER QQ-B-613
 3. GOLD PL. 3 MIN. THICK OVER NICKEL PL. 100 MIN. THICK OVER COPPER STRIKE
 4. BERYLLIUM COPPER PER QQ-C-530
 5. GOLD PL. 50 MIN. THICK OVER NICKEL PL. 100 MIN. THICK OVER COPPER STRIKE
 6. TEFLON MIL-P-19468

88.7.12

DIMENSIONS ARE IN MILLIMETERS						PART NO.		KAI JACK INDUSTRIAL CO., LTD. TAINAN TAIWAN R.O.C.			
5	HEX NUT	NOTE 1	NOTE 3	1	HN8-1/4-36X16	UNLESS OTHERWISE SPECIFIED TOLERANCES 0.5-6 = ±0.2 6-30 = ±0.4 30-120 = ±0.6 120-315 = ±1 315-1000 = ±1.6 1000-2000 = ±2.4		APPROVED <i>Mark C</i> DATE 07-09-99' CHECKED <i>Mark C</i> DATE 07-09-99' DRAWN <i>Betty L</i> DATE 07-09-99'		TITLE SMA BULKHEAD FEMALE TO FEMALE ADAPTOR	
4	LOCK WASHER	NOTE 2	NOTE 3	1	LW-102/65X05					DRAWING NO. KJ-SMA7471B1-3GT50G-50	
3	CONTACT PIN	NOTE 4	NOTE 5	1	SMA791C-3					FILE NO. F:\DWG\SMA\7471B1\50\3GT50G	
2	INSULATOR	NOTE 6	NATURAL	2	SMA7471B1-2T-50						
1	BODY	NOTE 1	NOTE 3	1	SMA7471B1-1-B						
NO.	DESCRIPTION	MATERIAL	FINISH	Q'TY	DRAWING NO.	SCALE	4/1	ISSUE	A		

1 2 3 4 5 6 7 8

88/7/12