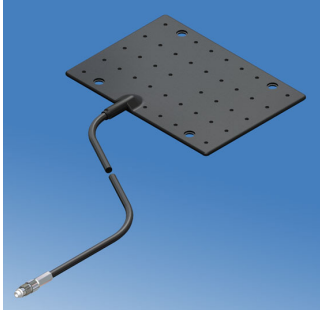


## Installation Instruction

### [BMP1 series]

#### Introduction



The BMP1 antenna is a vehicle mounted covert dipole antenna, suitable for installation within the front or rear bumpers. It is available pre-tuned in different frequency bands, so ensure that you have the correct version.

#### **Step 1: Remove the bumper (if necessary)**

Consult vehicle manufacturer's instruction for removal of the bumper.

Lay a soft covering on the ground for the bumper to rest on, to avoid damage to the bumper paint finish whilst removed.

#### **Step 2: Select a suitable mounting location.**

The antenna should be fitted to a non-conductive surface.

The position selected within the bumper should allow the antenna to be sited as far away as possible from metal parts of the vehicle chassis. Metal objects in close proximity to the antenna will affect its performance.

The antenna is flexible and will conform to reasonable curvature of the mounting surface.

#### **Step 3: Fit the antenna**

The antenna is supplied with an adhesive pad already fitted.

Note: The symbols on the antenna moulding show correct orientation for vertical polarisation.

Thoroughly clean the selected mounting area, remove the backing paper from adhesive pad and place antenna on surface, applying even pressure to ensure effective adhesion.

#### **Step 4: Re-Fit the bumper (if necessary)**

Follow the reverse of manufacturer's removal instructions

#### **Step 5: Route and Terminate the Coaxial Cable:**

Route the coaxial cable to the transceiver, taking care to avoid running it adjacent to existing vehicle wiring or any moving parts. A suitable grommet should be used to protect the cable if it is routed through a vehicle bulkhead or panel. Next fit a suitable coaxial connector or adaptor (as applicable) to the cable.

**NB. The cable must not be routed in front of any airbag device.**

#### **Step 6: Final Test and Commission:**

Using a suitable antenna analyser, carry out a VSWR test. A VSWR of  $<2.5:1$  should be achieved – if not, then it may be necessary to re-position the antenna.

Connect the antenna to the radio and carry out a transmission test. Place the radio in transmit mode to check for electromagnetic interference with vehicle systems. If interference or malfunction vehicle systems is observed, it may be necessary to re-position the antenna.