

1 2 3 4 5 6 7 8 9 10 11 12 13 14

A

B

C

D

E

F

G

H

I

J

A

B

C

D

E

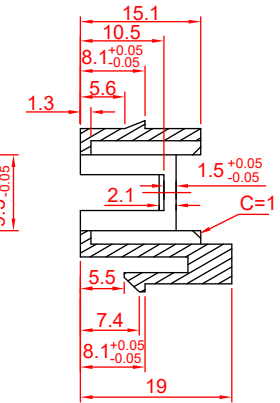
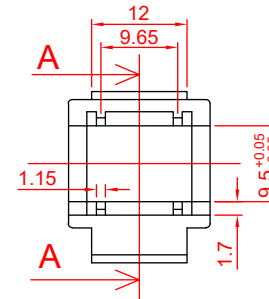
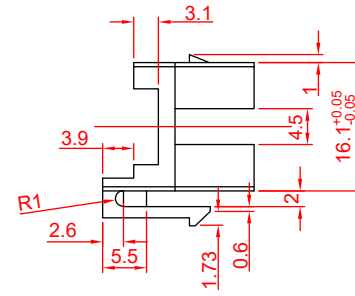
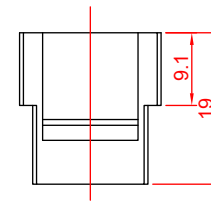
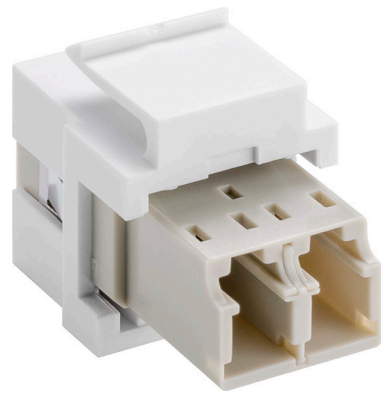
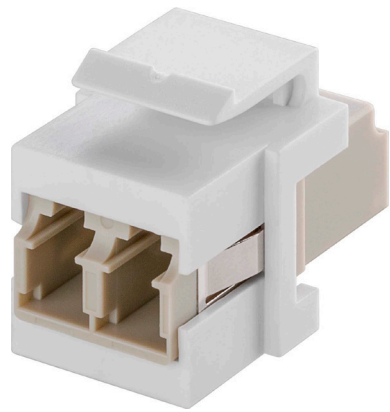
F

G

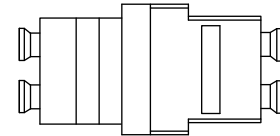
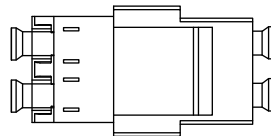
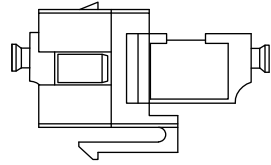
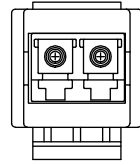
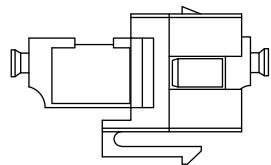
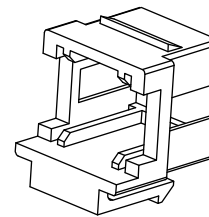
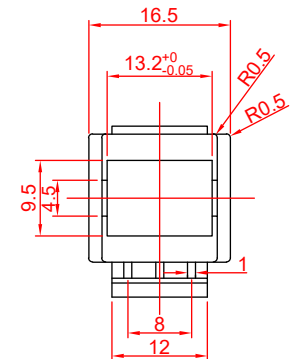
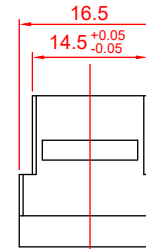
H

I

J



SECTION A-A



Keystone Modul Lichtwellenleiter

- 17,2 mm Breite, 2x LC-Duplex Buchse
- zum Einbau in Keystone Patchpanel, Dosen und Gehäusen usw
- für Multimode Faser
- Kunststoffgehäuse

Anschlüsse: 2x LC-Duplex Buchse
Material Gehäuse: ABS

Keystone fibre optic cable module

- 17.2 mm width, 2 LC-Duplex female
- for installation in the KeyStone patch panels, sockets, housing and so on
- for multimode fibres
- plastic housing

Connectors: 2x LC-Duplex female
Material housing: ABS

Änderungen

Datum	Name	gez.:	Datum	Name
		gez.:	23.11.2021	ir
		gepr.:	23.11.2021	aw
		Norm:		
Änderungen vorbehalten / Subject to change				

Bezeichnung
NET Keystone LWL LC Duplex female to female
Zeichnungs-Nr.:
80000



Blatt
1/1

von

1 2 3 4 5 6 7 8 9 10 11 12 13 14