

LD SERIES

LD1.2/2.2/3.2

Multiloop driver
Class D Amplifier



The new LD1.2, LD 2.2 and LD 3.2 in the Opus Technologies range are a French made and next-generation, low-loss magnetic loop amplifiers. This device incorporates two channel amplifiers and an OP-R mounting kit.

It can equip adjoining rooms (amphitheater, courtroom, etc.) with two magnetic loops installed hairpin or the areas with a metal. This type of installation makes it possible to limit the external radiation of the magnetic field, to guarantee uniformity of coverage and to provide a power which makes it possible to limit the distortions due to the presence of metal.

The LDx.2 series can also be used to equip large areas such as fairgrounds or stadium stands.

The amplifiers incorporate a fault synthesis that controls continuously the loop and the amplifier. The information is displayed on the front panel and can be deported thanks to a dry contact. Due to the high-efficiency Class D technology, amplifiers consume less and have natural cooling.

The amplifiers output voltage, the largest available on the market for this type of amplifier, ensures outstanding sound quality without clipping or distortion. The variable frequency of switching class D amplifiers developed by Opus Technologies allows unparalleled performance in the smallest case size on the market and an exceptional sound signal.

- Class D amplifier
- The most compact on the market
- Efficiency up to 92%
- Fanless convection
- High output voltage up to 48Vpk
- Voice alarm (100V) priority
- Automatic gain control
- Wall mounting available
- Warranty 5 years
- Correction settings due to metal losses
- Monitoring and detection of clipping, loop and temperature



Coverage

Cover meets the IEC 60118-4 standard

Loop	No metal loss			Moderate metal loss			High metal loss	
	Perimeter loop	Single array	Low overspill	Perimeter loop	Single array	Low overspill	Single array	Low overspill
LD1.2	500m ² 2x250m ²	900m ² 2x450m ²	450m ²	300m ² 2x150m ²	500m ² 2x250m ²	200m ²	Contact us	
LD2.2	900m ² 2x450m ²	1300m ² 2x650m ²	650m ²	500m ² 2x250m ²	900m ² 2x450m ²	400m ²	300m ² 2x150m ²	200m ²
LD3.2	2000m ² 2x1000m ²	2500m ² 2x1250m ²	1 450m ²	900m ² 2x450m ²	1300m ² 2x650m ²	500m ²	500m ² 2x250m ²	300m ²

LD SERIES

LD1.2/2.2/3.2

Multiloop driver
Class D Amplifier



	LD1.2	LD2.2	LD3.2
Max coverage: single loop	600m ² (15x40m ²)	1200m ² (20x60m ²)	2000m ² (25x80m ²)
Max coverage: multiloop	300m ² (10x30m ²)	525m ² (15x35m ²)	800m ² (20x50m ²)
Operating temperature	0 to +45°C	0 to +45°C	0 to +45°C
Storage temperature	-30 to +70°C	-30 to +70°C	-30 to +70°C

INPUT

Audio inputs	3 inputs: x2 line/microphone, x1 100V	3 inputs: x2 line/microphone, x1 100V	3 inputs: x2 line/microphone, x1 100V
Connector type	Phoenix et/ou Combo Neutrik	Phoenix et/ou Combo Neutrik	Phoenix et/ou Combo Neutrik
Phantom supply	12V 2mA	12V 2mA	12V 2mA
Sensitivity	-50dB microphone, +40dB 100V, -10dB line	-50dB microphone, +40dB 100V, -10dB line	-50dB microphone, +40dB 100V, -10dB line
Slave entry	Jack 6.35mm	Jack 6.35mm	Jack 6.35mm
Priority	100V input, INPUT 1	100V input, INPUT 1	100V input, INPUT 1

POWER SUPPLY

Type	Integrated	Integrated	Integrated
Voltage	115/230V (automatic) 50/60 Hz	115/230V (automatic) 50/60 Hz	115/230V (automatic) 50/60 Hz
Nominal consumption 1 Ohm	50W	100W	180W
Maximum input power	<500VA	<600VA	<700VA
Consumption at rest on connected loop	14W at 230V AC, 2 loops of 1 Ohm connected, at ambient temperature after 30 minutes of stabilization		

AUDIO CHARACTERISTICS

THD	<0,5% @1ohm / 1KHz / nominal current	<0,5% @1ohm / 1KHz / nominal current	<0,5% @1ohm / 1KHz / nominal current
Metal loss correction	0 to 3 dB per octave	0 to 3 dB per octave	0 to 3 dB per octave
Automatic gain control	AGC optimized for speech Dynamic > 36dB	AGC optimized for speech Dynamic > 36dB	AGC optimized for speech Dynamic > 36dB
Bandwidth	80 Hz to 9,5 kHz at -3 dB	80 Hz to 9,5 kHz at -3 dB	80 Hz à 9,5 kHz at -3 dB
Phase shift	Included	Included	Included

	LD1.2	LD2.2	LD3.2
OUTPUT			
Loop impedance	0,5Ω à 3Ω	0,5Ω à 3Ω	0,5Ω à 3Ω
Output voltage	34Vrms (48Vpk)	34Vrms (48Vpk)	34Vrms (48Vpk)
Peak current	2x 8Apk	2x 11Apk	2x 15Apk
RMS current	2 x 5Arms	2 x 7,5Arms	2 x 10Arms
ADDITIONAL FUNCTIONS			
LED display	« Power », « Protect 1 », « Protect 2 », « Loop »	« Power », « Protect 1 », « Protect 2 », « Loop »	« Power », « Protect 1 », « Protect 2 », « Loop »
Verification (synthesis fault)	Open loop Thermal protection	Open loop Thermal protection	Open loop Thermal protection
Relay	NO/NC fault relay 0,5A/125Vac, 1A/24VDC	NO/NC fault relay 0,5A/125Vac, 1A/24VDC	NO/NC fault relay 0,5A/125Vac, 1A/24VDC
DIMENSIONS (MM)			
HxLxD	42 x 200 x 215 mm	42 x 200 x 215 mm	42 x 200 x 215 mm
Weight	1,56 kg	1,56 kg	1,56 kg

RC

Copper tape with 1 conductor designed for induction loops. 1x1,8 mm².



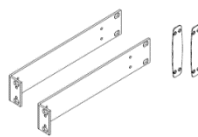
OP-FSM-02

Tester and magnetic field meter in accordance with the IEC 60118-4 specification. Supplied with an OP-778 headset.

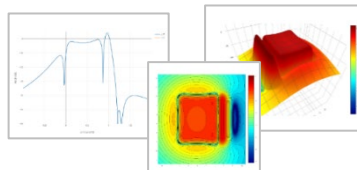


OP-R

Complete kit for wall mounting or 1 or 2 units of the LD series in a 19" rack.



Opus Smartloop



The loop simulation software developed by Opus guarantees technical studies that comply with the EN60118-4 standard.

C10-RC

Terminal block for RC copper foil.

