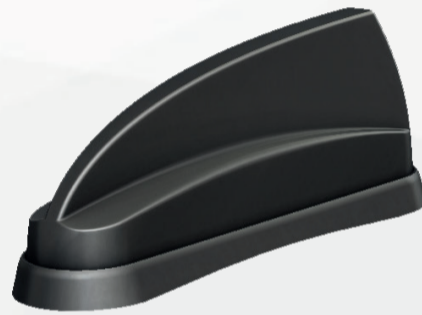


# Next Generation LTE Antennas

Introducing the industry's most comprehensive range of antenna solutions that cover LTE Band 71 (617-698MHz), CBRS, Private LTE, and more. Panorama Antennas offers cutting edge, high performance products over an ever wider frequency spectrum allowing customers to purchase, install and utilise a future-proof product now for a whole range of different applications.

## Mobile

### 4G/5G MiMo Sharkee® Antenna



#### FEATURES

2x2 MiMo 5G/4G LTE  
617-960 / 1710-6000MHz  
Optional Integrated GPS/GNSS  
Up to 4x4 MiMo WiFi 2.4/5GHz  
Support for VHF / UHF or AM/FM external whip on GPSD model  
UN118 Cables

The GPSD and SHKG Sharkee® range has become a byword for industry leading technology in a discrete OEM sharfin housing. The 6-60 brings 5G capability to the Sharkee® family.

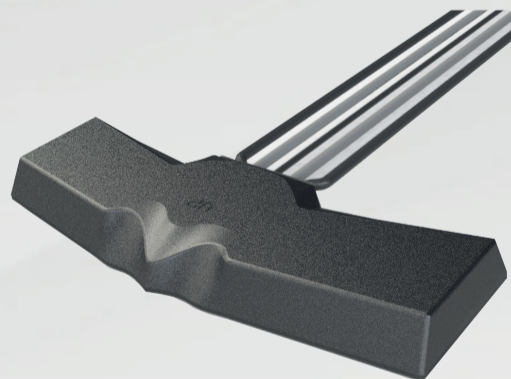
**IP69K  
RATED**



Part no.	MiMo LTE	GPS/ GNSS	MiMo WiFi	External Whip
GPSD-6-60	2x2	•		•
GPSD-6-60-DW	2x2	•	2x2	•
GPSD-6-60-TW	2x2	•	3x3	•
GPSD-6-60-QW	2x2	•	4x4	•
SHKG-6-60	2x2	•		
SHKG-6-60-DW	2x2	•	2x2	
SHKG-6-60-TW	2x2	•	3x3	
SHKG-6-60-QW	2x2	•	4x4	

\* Part number excludes extension cable assemblies

### Dash Mount MiMo Antenna



#### FEATURES

2x2 MiMo 5G/4G LTE  
617-960 / 1710-6000MHz  
Optional Integrated GPS/GNSS  
Optional SiSo or 2x2 MiMo WiFi 2.4/5GHz  
Supplied with UN118 Cables

The Panorama BAT range is designed for Telematics applications requiring high speed data with MiMo 4G / 5G and fall back 3G/2G support along with optional positioning through GPS/GNSS, and optional dual band 2.4/5.0GHz WiFi.



Part no.	MiMo LTE	GPS/ GNSS	WiFi
BATM-7-60	2x2		
BATGM-7-60	2x2	•	
BATGM-7-60-S24-58	2x2	•	1x
BATGM-7-60-24-58	2x2	•	2x2

\* Antenna supplied with 3m / 10ft of cable assembly with SMA male (cellular & GNSS) and reverse polarity SMA male (WiFi). Other cable / connector configurations available upon request

## Great White® 5G MiMo Antenna

### FEATURES

2x2 MiMo 5G/4G LTE  
617-960 / 1710-6000MHz  
Optional Integrated GPS/GNSS  
Up to 6x6 MiMo WiFi 2.4/5.0GHz  
UN118 Cables

The Great White® 5G range provides effective 2x2 MiMo LTE operations with excellent isolation and low correlation coefficient. Available in Black or White housing.


**IK10  
RATED**
**IP69  
RATED**


Part no.	MiMo LTE	GPS/ GNSS	MiMo WiFi
LPMM-6-60	2x2		
LGMM-6-60	2x2	•	
LGMDM-6-60-24-58	2x2	•	2x2
LGMTM-6-60-24-58	2x2	•	3x3
LGMQM-6-60-24-58	2x2	•	4x4
LGMHM-6-60-24-58	2x2	•	6x6

\*Part numbers refer to the black version only

## MAKO® 5G MiMo Antenna

### FEATURES

4x4 MiMo 5G/4G LTE  
617-960 / 1710-6000MHz  
Optional Integrated GPS/GNSS  
Up to 6x6 MiMo WiFi 2.4/5.0GHz  
UN118 Cables

The MAKO® 5G is up to 11 antennas in a single housing. Designed for use with Advanced Pro routers that require a 4x4 MiMo 5G/4G LTE antenna system. Available in black or white housing.


**IK10  
RATED**
**IP69  
RATED**


Part no.	MiMo LTE	GPS/ GNSS	MiMo WiFi
LPMM4-6-60	4x4		
LGMM4-6-60	4x4	•	
LGMDM4-6-60-24-58	4x4	•	2x2
LGMTM4-6-60-24-58	4x4	•	3x3
LGMQM4-6-60-24-58	4x4	•	4x4
LGMHM4-6-60-24-58	4x4	•	6x6

\*Part numbers refer to the black version only

# Branch

## Directional 2x2 MiMo 4G/5G Antenna


**IP66  
RATED**


### FEATURES

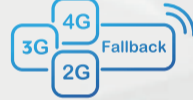
2x2 MiMo High Gain Directional Antenna for 4G/5G  
617-960 / 1710-6000MHz  
Optional Integrated GPS/GNSS  
Suitable for wall or mast mounting

The WMM2G-6-60 is a high gain directional 2x2 MiMo antenna for 4G and 5G networks. It incorporates two wideband element assemblies in a single housing and is designed to support fixed site client devices. It offers 6dBi peak gain for 617- 960MHz and 9dBi peak gain for 1710-6000MHz.

Part no.	MiMo LTE	GPS/ GNSS	Cable & Connector
WMM2G-6-60-05NJ	2x2		0.5m (1.6') 2x N Female
WMM2G-6-60-5SP	2x2		5m (17') 2x SMA Male
WMM2GG-6-60-05NJ	2x2	•	0.5m (1.6') 2x N Female
WMM2GG-6-60-5SP	2x2	•	5m (17') 2x SMA Male

\* Extension cables available upon request

## Directional 4x4 MiMo 4G/5G Antenna


**IP66  
RATED**


### FEATURES

4x4 MiMo High Gain Directional Antenna for 4G/5G  
617-960 / 1710-6000MHz  
Supports New Generation CAT18/20 Devices  
Optional Integrated GPS/GNSS  
Suitable for wall or mast mounting

The WMM4G-6-60 is a high gain directional 4x4 MiMo antenna for 4G and 5G networks. It incorporates four pairs of wideband element assemblies in a single housing and is designed to support fixed site CAT18/20 client devices. It offers 6dBi peak gain for 617- 960MHz and 9dBi peak gain for 1710-6000MHz.

Part no.	MiMo LTE	GPS/ GNSS	Cable & Connector
WMM4G-6-60-05NJ	4x4		0.5m (1.6') 4x N Female
WMM4G-6-60-5SP	4x4		5m (17') 4x SMA Male
WM-IN2582-10	4x4		10m (33') 4x SMA Male
WM-IN2582-15	4x4		15m (49') 4x SMA Male
WMM4GG-6-60-05NJ	4x4	•	0.5m (1.6') 4x N Female
WMM4GG-6-60-5SP	4x4	•	5m (17') 4x SMA Male

\* Extension cables available upon request

**MAKING THE CONNECTION**

[www.panorama-antennas.com](http://www.panorama-antennas.com)

# IoT

## Low Profile Panel Antenna

### FEATURES

Cost effective 2G/3G/4G/5G coverage  
617-960 / 1710-6000MHz  
Integrated low loss cable  
Robust but subtle design



Part no.	Cable & Connector
LPB-6-60-2SP	2m (6'6") SMA Male
LPB-6-60-5SP	5m (17') SMA Male

\*Other cable lengths and connector types available upon request

The LPB-6-60 is supplied with integrated 5mm / 0.2" double shielded CS29 coaxial cable and is available with a wide variety of connectors fitted. This Antenna is an ideal solution for use in industrial and domestic environments with cellular modems/routers and Machine to Machine (M2M) wireless connectivity applications.

## Low Profile Magnetic Antenna

### FEATURES

Cost effective 2G/3G/4G/5G coverage  
617-960 / 1710-600MHz  
Magnetic Mount  
Low Profile Design



Part no.	Cable & Connector
LPBEM-6-60-2SP	2m (6'6") SMA Male
LPBEM-6-60-5SP	5m (17') SMA Male

The Panorama LPBEM-6-60 is a range of low cost high performance magnetic mount antennas for temporary fit applications. At only 95mm (3.7") high and protected by a robust high impact radome the antenna is almost impervious to daily wear and tear.

## 4G/5G Bracket Mount Antenna

### FEATURES

Cost Effective 2G/3G/4G/5G coverage  
617-960 / 1710-6000MHz  
Wall, mast or panel mount  
Integrated low loss cable



Part no.	Cable & Connector
B4BE-6-60-2SP	2m (6'6") SMA Plug
B4BE-6-60-5SP	5m (17') SMA Plug

\*Other cable lengths and connector types available upon request

The B4BE antenna is a cost effective omni-directional broad band antenna for 5G/4G/3G and 2G devices from 617-960/1710-6000MHz and is suitable for external or internal installation. The omni-directional radiation pattern allows easy placement of the antenna in an elevated position.

**MAKING THE CONNECTION**

[www.panorama-antennas.com](http://www.panorama-antennas.com)

## Wide Band 4G/5G Terminal Paddle Antenna



### FEATURES

Ultra Wide Band - 2G/3G/4G/5G  
617-960 / 1710-6000MHz  
Suitable for routers and terminals  
Articulated connector

The PWB-6-60 antenna is a ground plane independent antenna covering 617-960/1710-3800/4400-6000MHz. Supporting 2G/3G/4G and new 5G bands the PWB-6-60 is the ideal one-size-fits-all solution for next generation devices, routers and terminals.

Part no.	Connector
PWB-6-60-RSMAP	Articulated SMA plug connector
PWB-6-60-RFDJ	Articulated FAKRA D female connector

## 4G/5G Desk Mount MiMo Antenna



### FEATURES

2x2 MiMo for 4G/5G  
617-960 / 1710-6000MHz  
Desk, window or wall mount  
Integrated twin cable with a range of connectors

The DMM antenna provides an innovative and future proof solution for 2G/3G/4G and 5G networks. Incorporating two separately fed ultra wideband elements in a single housing the DMM is equipped to provide portable MiMo and diversity support for frequencies from 617-960/1710-6000MHz.

The DMM is an cost effective value added product for network operators and service providers ensuring a stable link with improved data rates for subscribers thereby improving satisfaction and retention.

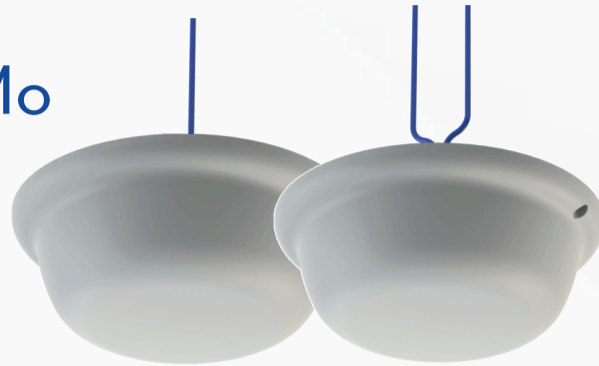
Part no.	Connector
DMM-6-60-2SP	2m (6'6") 2x SMA Male
DMM-6-60-2TS9	2m (6'6") 2x TS9 Male

**MAKING THE CONNECTION**

[www.panorama-antennas.com](http://www.panorama-antennas.com)

# In Building

## Low PIM SiSo/MiMo Omni Ceiling Antenna



### FEATURES

617-960 / 1710-6000MHz  
Low profile  
Flame Retardant Materials  
Low PIM Construction

The CMSLP-6-60 range has been designed to provide omni-directional coverage for 4G & 5G networks in a low profile package. The compact, robust low-profile housing contains an efficient low PIM element covering 617-960/1710-6000MHz.

The CMM-6-60 range has been designed to provide 2x2 MiMo coverage for 4G & 5G networks in a low profile package. The compact, robust low-profile housing contains two antenna elements with effective isolation and low correlation covering 617-960/1710-6000MHz.

Part no.	LTE	Connector
CMSLP-6-60-05NJ	1x	N Female
CMSLP-6-60-054310J	1x	4.3-10
CMM-6-60-05NJ	2x2	N Female
CMM-6-60-054310J	2x2	4.3-10

## Ultra Low Profile UHF & Cellular Ceiling Antenna



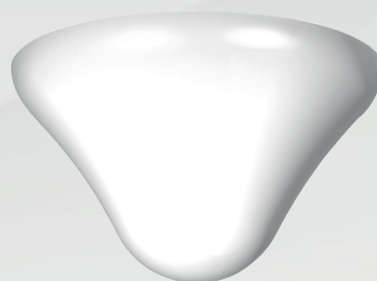
### FEATURES

380-520 / 617-960 / 1710-3800MHz  
Ultra Low Profile  
SiSo UHF+3G/4G/5G Antenna  
Flame Retardant Materials & Low PIM

The CMSLP-038-4 range has been designed to provide SiSo UHF+3G/4G & 3.8GHz 5G coverage for DAS networks in an ultra low profile package. The compact, robust low-profile housing contains a highly efficient antenna element covering 380-520/617-960/1710-3800MHz.

Part no.	Connector
CMSLP-038-4-05NJ	N Female
CMSLP-038-4-054310J	4.3-10

## UHF & Cellular Ceiling Antenna



### FEATURES

380-520 / 617-960 / 1710-6000MHz  
Ceiling mount design  
Future proof UHF and cellular coverage  
Flame Retardant Radome & Low PIM

Panorama's CMWBD-038-3-NJ allows businesses and facilities to support multi-service / multi-operator wireless coverage. A huge number of services are supported from 380MHz UHF to 6GHz - including UHF, GSM900, AWS 1700MHz, Quadband GSM, 3G UMTS, 2.4GHz WLAN, LTE & WiMAX etc. enabling simultaneous connectivity for employees, consumers and emergency services and providing in-building service providers and DAS installers with a convenient one size fits all solution.

Part no.	Connector
CMWBD-038-3-NJ	N Female

**MAKING THE CONNECTION**

[www.panorama-antennas.com](http://www.panorama-antennas.com)