

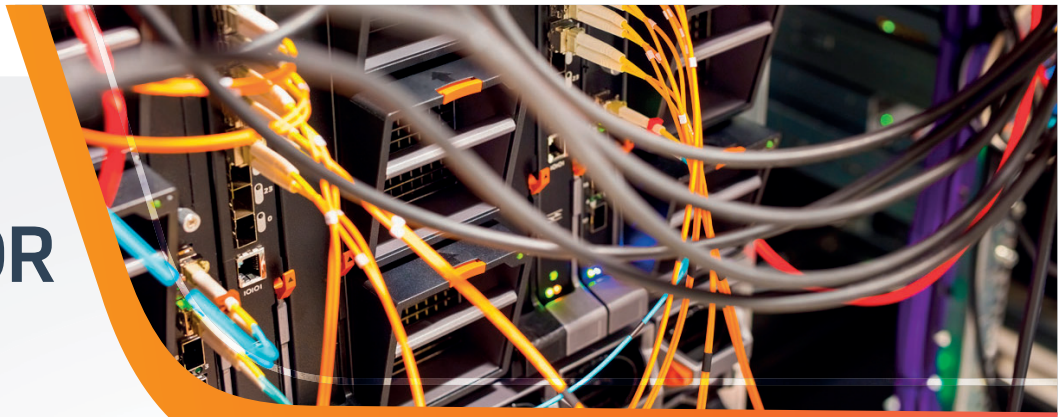


FIBER TOOLS

OFL100 OTDR

OPTICAL TIME-DOMAIN
REFLECTOMETER

TESTING | TROUBLESHOOTING | ACCURACY



The OFL100 OTDR enables the front-line fiber technician to quickly locate loss events in the last mile of the FTTx network. The convenient touchscreen provides an intuitive interface for even newly provisioned technicians making it simple to locate loss events such as cut fibers, contaminated or damaged connectors, and excessively bent fibers.

The Auto Mode allows for the technician to initiate a measurement without adjusting any test parameters. The Expert OTDR Mode provides access to all features that the savvy OTDR technician demands so they can refine measurement parameters enabling them to troubleshoot the most demanding faults.

Results can be displayed using a traditional OTDR trace or linear map with user selectable Pass/Fail analysis. All events are measured, annotated, saved, and exported as an industry standard SOR file that is compliant to GR196 Telcordia standards. The SOR file can be imported into the Trace Viewing program where analysis can be performed, and test results can be saved as a PDF report.

**Two Year
Warranty**



ORDERING INFORMATION:

CAT. NO.	DESCRIPTION
OFL100-NA	OFL100 with North American Power Supply
OFL100-EU	OFL100 with European Power Supply

Product Features:

FAST.

- Easy to use one button test function. Start measurements with the push of one button.
- Auto test automatically sets test parameters for optimum test results.

ACCURATE.

- Graphical touchscreen interface is easy to read, even in high ambient light conditions.
- 128,000 data points provides high accuracy results.
- Measure lengths and fiber defects to quickly locate faults.

RELIABLE.

- Link Viewer annotates the entire fiber link in an easy to interpret Pass/Fail format.
- Cable acceptance reports generate customized reports that include trace signature and fiber events.
- Long life battery so you can work longer without recharging - up to 12 hour shift capable.

Includes:

- OFL100
- Power Supply with USB cable
- Carry Case
- SC/APC Adapter
- Certificate of Calibration
- Quick Reference Card
- 8GB SD card

ACCESSORIES:

CAT. NO.	DESCRIPTION
OFL100-SCAPC	SC/APC Adapter
OFL100-LCAPC	LC/APC Adapter
OFL100-FCAPC	FC/APC Adapter
OFLPS-NA	OFL100 North American Power Supply with USB Cable
OFLPS-UK	OFL100 United Kingdom Power Supply with USB Cable
OFLPS-EU	OFL100 European Power Supply with USB Cable
OFLCC	OFL100 Carry Case

OFL100 Specifications:

OTDR	
Wavelength	1310/1550nm
Dynamic Range	26/24dB
Event Deadzone	2.5m
Attenuation Deadzone	8m
Measurement Ranges	500m, 1km, 2km, 4km, 8km, 16km, 32km, 64km and 100km
Pulse Widths	3ns, 5ns, 10ns, 20ns, 30ns, 50ns, 80ns, 160ns, 320ns, 500ns, 800ns, 1µs, 2µs, 3µs, 5µs, 8µs, 10µs and 20µs
Measurement Accuracy	$\pm(1m + \text{Sample Interval} + 0.005\% \times \text{Test Distance})$
Linearity	$\leq 0.05\text{dB/dB}$
Sampling Points	16,000 to 128,000
Loss Resolution	0.001dB
Loss Threshold	0.20dB
Distance Resolution	0.001m
Refractive Index	1.00000 to 2.00000
Reflection Accuracy	$\pm 3\text{dB}$
File Format	SOR compliant to Telcordia GR196
Loss Analysis	Four Point & Five Point
Laser Safety	Class 1M
Bulkhead	SC/APC (Optional LC and FC Available)
Trace Update Rate	3Hz
Optical Power Meter	
Wavelength Range	800nm to 1700nm
Calibrated Wavelengths	850nm, 980nm, 1300nm, 1310nm, 1490nm, 1550nm, 1625nm and 1650nm
Measurement Range	+10dBm to -70dBm
Measurement Resolution	0.01dB
Measurement Accuracy	$\pm 5\%$
Tone Frequencies/Sensing	CW, 270Hz, 330Hz, 1kHz and 2kHz
Bulkhead	2.5mm Universal
Visual Fault Locator	
Wavelength	650nm $\pm 20\text{nm}$
Output Power	<1mW
Mode of Operation	CW, 1Hz and 2Hz
Bulkhead	2.5mm Universal
Laser Safety	Class 2

Stabilized Laser Source	
Wavelength	1310/1550nm
Output Power	$\geq -5\text{dBm}$
Power Stability	CW, $\pm 0.5\text{dB}/15$ minutes after continuous on of 15 minutes
Bulkhead	SC/APC (Optional LC and FC Available)
Tone Frequencies	500m, 1km, 2km, 4km, 8km, 16km, 32km, 64km and 100km
Optical Loss Testing	
Wavelength	1310nm and 1550nm
Insertion Loss Testing	Integrated OPM and SLS
RJ45 Cable Tracker	
Mode	Digital
Distance	$\geq 300\text{m}$
Pair Tracing	Compatible
RJ45 Cable Measurement	
Distance	$\geq 300\text{m}$
Mechanical	
Display	4.3" 800x400 TFT LCD Touchscreen
Power Supply	AC to DC 100-240VAC, 50/60Hz
Power Supply Format	North America, United Kingdom and European
Battery Lifetime	>12 Hours Continuous Test
Battery	3.7V, 4Ah Li ION
Weight	<1.1lbs (<0.5kg) Including Battery
Size	6.8"x 4.3"x 1.8" (173mm x 109mm x 45mm)
Data	
Internal Storage	8GB (>200,000 Curves)
Interface	USB Type C, 8GB SD Card
Environmental	
Operational Temperature	-10°C to +50°C
Storage Temperature	-40°C to +70°C
Relative Humidity	0 to 95% Non-Condensing

*Specifications subject to change without notice

1390 Aspen Way Vista, CA • 92081 **OFL100 01/22**
 Latin America Phone : 1 760 510 0558 | EMEA Phone: +44 (0) 1633 927 050
 India and SAARC Region Sales: indiaSales@tempocom.com

©2022 Tempo Communications Inc. • An ISO 9001 Company

EMEA: Tempo Europe Limited • Brecon House
 William Brown Close • Cwmbran • NP44 3AB • UK

TempoCom.com | tel 800.642.2155 | sales@tempocom.com



Renewed Vision. Innovation Forward.



Follow us @TempoComms